

# The Cleobury Clarion

**SERVING CLEOBURY COUNTRY**

**DECEMBER/JANUARY 2020/21**

## TRUE CHRISTMAS SPIRIT



*From left: Guy James, Pete Blackburn, Liz Smith. Ian Smith and Peter Cuthbert.*

The Parish Church wanted an eye-catching display to remind us that Christmas celebrates the birth of Jesus Christ. A time of peace. Liz Smith was looking for a likely source of skill to do the job and asked Pete Blackburn of Cleobury Mens Shed if he could help. No better man to ask and within days Pete was arranging material and gathering volunteers for the

job. It took two weeks to plan, draw, cut, paint and assemble one very noticeable message of goodwill and on November 11th Liz arrived at Pete Blackburn's place to view the result. It depicts Mary and Joseph with the crib in which the Christ child lays, a true Nativity Profile.

"I am just bowled over by the truly wonderful job that you have all done," she told the team. "The finished article is just beautiful and I cannot wait for everyone to see it."

It is made of outdoor quality ply and finished with two coats of outside quality paint that means it will have a long life, adding to the happy Christmas atmosphere for years to come.

More news about the Men's Shed on Page 45.

## THE BEST DRESSED CHRISTMAS SHOP WINDOW

The Clarion Cup will be awarded this year to the High Street window which best celebrates Christmas 2020.

Last year the theme was more general, this year windows should be as full of Christmas as you can manage please.

The winner will be awarded a plaque to keep and can display the Clarion Cup in their window during January 2021.

Please take part and help make our town a special place for Christmas as you did last year.

We have all worked together since March to support each other so let us continue to spread hope and happiness during the Christmas period through some windows.

A judging panel including the Clarion's editor Jim Reynolds will decide the winner prior to Christmas Eve and the cup and replica will be presented after the Christmas break.

Thank you for your support. Have a gentle Christmas and a peaceful and healthy New Year.

*Councillor Paul French*

## Christmas Trees For Sale

**Pick your own, with or without roots.**

**£2.00 per foot, all sizes available.**

**Telephone: 01584 890768**

**Email: [d.edwards373@outlook.com](mailto:d.edwards373@outlook.com)**

# CLEOBURY FUNERAL DIRECTORS

**'The Local Family Funeral Company You Can Trust At Your Time Of Need'**



***UNDER THE PERSONAL SUPERVISION OF ADRIAN SATTERLY***

**Our reputation has been built on trust and professionalism. All our attention is concentrated on satisfying the needs of our clients and their families. Your neighbourhood is our neighbourhood and as Cleobury's only resident Funeral Director, with over 20 years' experience in arranging and directing funerals, we take personal pride in serving you well.**

- \* Pre-Payment Funeral Plans
- \* Home Visits Available
- \* Horse Drawn Funerals
- \* 24-Hour Service
- \* Monumental Masonry
- \* Catering & Venue Arranged



*As members of The National Society of Allied and Independent Funeral Directors (SAIF), we abide by a strict code of practice that provides further confidence in our professional service and approach.*

*Our premises offer full facilities for the care of your loved one, meaning they remain local to home, from the moment they come into our care until the day of the funeral.*

**8 - 9, TALBOT SQUARE, CLEOBURY MORTIMER**

**[www.cleoburyfuneraldirectors.co.uk](http://www.cleoburyfuneraldirectors.co.uk)**

**TELEPHONE: 01299 272963 or 01299 540541**

***'Serving the local communities with dignity & understanding'***



**Golden Charter**   
Smart Planning for Later Life





*This is Keelie with Patch, one of the rescued dogs waiting happily for a new owner at Birch Hill.  
 See Page 9.*



*Much improved facilities at the Parish Hall.  
 See Page 11.*



*Winter Snows? Some of us have built-in warmth Winter in the Wyre Forest.  
 See Page 41.*

**And On Other Pages....**

- 5 - The Pumpkin Trail
- 7 - Clee Hill Wildlife Group
- 13 - New Face on the Council
- 15 - The Clarion Jobs Page
- 17 - The Shoe Boxes
- 19 - Stepping Out!
- 21 - Children's Clothes Co-op
- 25 - Philip Dunne MP
- 27 - Cleobury Community Hub
- 29 - Christmas Events
- 31 - Social Calendar
- 33 - Farm Life in Wales - Part 3
- 35 - The Cleobury Chronicles
- 37 - Cleobury Mortimer Benefice
- 39 - Simon Morton on Gardens
- 43 - Mrs Grumpy
- 45 - The Men's Shed
- 51 - The Town Council Report
- 53 - Let's Beat the Scammers
- 55 - The Neighbourhood Plan
- 57 - Catherton Common Update
- 59 - Local Information

*Charlton Interiors*

---

UPHOLSTERY AND INTERIORS

Rosemary Jones 07837 609229  
 01746 718285  
 info@charltoninteriors.com  
 charltoninteriors.com

**ALAN PRICE DIRECT TRAVEL**

PRIVATE HIRE TRAVEL

AIRPORT TRANSFERS

LOCAL & LONG DISTANCE,

COURIER SERVICE

FRIENDLY & RELIABLE

FULLY COUNCIL LICENSED



Tel: 01584 890014  
 MOBILE: 0773 3079679



# RED HARE

45 HIGH STREET  
CLEOBURY MORTIMER  
WWW.REDHARESALON.CO.UK

01299 270702

YOUR  
HAIR  
IS  
OUR  
BEST  
ADVERT

PPD FREE - PARABEN FREE - SULPHATE FREE - CRUELTY FREE

“Red Hare now offers a private hairdressing room. Perfect for those wanting more privacy, peace and quiet”



## CLEOBURY CHIROPRACTIC

31 High St. Cleobury Mortimer DY14 8DQ

**JS** James  
Smith  
OSTEOPATHS

We offer both **CHIROPRACTIC** and **OSTEOPATHY**,  
using gentle methods suitable for all ages.  
Appointments available outside of normal working hours.  
Both practitioners are fully registered, insured & regulated.

**Sue Brown**  
MA MSc DC MMCA  
CHIROPRACTOR

- \* BACK PAIN \* SCIATICA \* POSTURAL PROBLEMS
- \* JOINT PAIN \* HEADACHES (arising from the neck)
- \* Some SPORTS INJURIES

- PLUS** \* COMPUTER (DSE) WORKSTATION ASSESSMENTS  
\* BACK CLASS – Weekly exercise class for those with back/neck pain.

**Hands for Heroes**  
Free Chiropractic Care for War Veterans



**iO**  
THE INSTITUTE  
of OSTEOPATHY



01299 519351 / 07932 000028 / 07506 287191

[www.notjustaboutbackpain.com](http://www.notjustaboutbackpain.com)

[www.jsosteopaths.co.uk](http://www.jsosteopaths.co.uk)

**GCC registered**  
General Chiropractic Council  
[www.gcc-uk.org](http://www.gcc-uk.org)

  
General  
Osteopathic  
Council  
**I'M REGISTERED**  
Registration no. 9254  
[www.osteopathy.org.uk](http://www.osteopathy.org.uk)

## THE PUMPKIN TRAIL

Coronavirus meant the annual Trick or Treat children's event had to be rethought. So the Friends of the Primary School came up with the novel idea of scarecrows and pumpkins in gardens that people could admire. Halloween was the big night, when families could walk around the town, but the show lasted a lot longer than that.



*This well dressed scarecrow with toadstool and pumpkins was a fine example of the work put into a successful event.*

To help raise funds for the school, the entry fee for scarecrows was £2.00 and £3.00 for a garden display. And the result was £398 raised

on the night - a great result for what was an unknown trial that attracted about 45 houses to be part of the show. Nice one.

## CLOWS TOP GARDENING CLUB

Clows Top Garden Club will not be resuming in January as the Covid-19 virus is still around. We all need to keep safe and well in these unusual times and follow government guidelines.

Rest assured we will let you know when we are allowed to meet up again. But for now, keep gardening, stay safe and continue supporting each other.

### Garden Notes - Jobs to Do In December

Deadhead winter flowering pansies for continued flowering

Mulch around hellebores with bark chips to help keep leaves clean

Cut shoots of winter flowering shrubs and bring indoors

Water plants, but do so sparingly and less often than in milder months

Pick dead leaves off plants to avoid the build-up of hidden pests

Check stored bulbs for signs of rot or disease and discard those affected

Spread out pots to allow air flow to prevent fungal problems

Check fruit tree ties and loosen where necessary

Harvest remaining root crops and prepare ground for spring

Tidy shed and clean pots ready for next spring.

*Pauline Bowen*

## CONGRATULATIONS

To local builders' merchants Thompson and Parkes on winning the Best Builders Merchant and DIY Supplier in the Midlands title in the SME News Magazine's UK Enterprise Awards.

Company director Jean Morris said: "It is thanks to our amazing staff...their dedication is the reason we have won this award and I thank every one of them."

The company employ over 20 local people at their branches in Kidderminster, Stourport and Oretton.



**The Oak Boy**  
TRADITIONAL OAK FRAMING  
SINCE 2011  
07398 233443

John Caswell  
Johnjocaswell@yahoo.com

SERVICES AVAILABLE

➤ Flooring	➤ Landscaping
➤ Manufacturing & fitting doors & windows	➤ Patios
➤ Kitchens	➤ Brick & Stone work
➤ Cladding	➤ Roofing, Tiling, Guttering
➤ Studwork	➤ General Building
➤ Bespoke Oak Framing	➤ Property Maintenance

Call now for a Free Quotation!



**CM BESPOKE CARE**



Personal, Nursing and Domestic care.  
Tailored to your needs.

**Call for a free consultation**

**Tel: 01746 718816**

**Mobile: 07943834132**

www.cmbcare.co.uk  
www.facebook.com/cmbcare  
email: cmbespokecare@btconnect.com



**DRY CLEANING & LAUNDRY SERVICE**  
**20 HIGH STREET, CLEOBURY MORTIMER**  
**01299 270571**  
**HOUSEHOLD & COMMERCIAL WORK WELCOME**  
**FULLY ATTENDED, OPEN 7 DAYS**

Self Service ~ Full Service Wash/ Dry/ Fold/ Ironing ~ Large Machine for Big Items  
Service Washing for Duvets/ Blankets/ Sleeping Bags ~ Team Sports Kit Laundry Service  
Equestrian Rug Cleaning ~ Laundry Service for Pet Items  
Professional Shirt Service ~ Nikwax Wash & Proof for Outdoor Clothing

*.... the place to air your dirty laundry!*

# TDC CARPENTRY SERVICES

Fully insured qualified professional  
Excellent workmanship and quality customer care  
From hanging doors, fitting kitchens to bespoke projects

**Tim Clare - 07890 519980**



**ANNA'S**  
**Barking Barbers**  
MOBILE DOG GROOMING

A professional mobile dog grooming service,  
keeping it easy for you and stress free for your dog.  
Every groom is tailored to the dogs individual needs.

**07508241628**

 @annasbarkingbarbers

Fully Insured | DBS Checked

**City & Guilds**  
Qualified



## CLEE HILL COMMUNITY WILDLIFE GROUP

Just giving an update on the group. First I am hoping that you have all managed to stay safe in this strange new world of ours. You will have noticed that we have had a very quiet 2020. The AGM was cancelled, all the surveys were cancelled except for the bird survey, run by Leo. Although you may all have been able to watch wildlife in one form or another no formal recording was undertaken.

CHCWG had tentatively considered having an autumn event, a talk given by a brilliant speaker then a raffle with tea/coffee and cake. But with the ongoing restrictions getting tighter further into Autumn the group decided that all events had to be put on hold until spring of 2021. We will try to put that in the diary for next year.

The Shropshire Community Wildlife Groups have a new website [www.shropscwgs.org.uk](http://www.shropscwgs.org.uk); we are one of several groups based in South Shropshire. This new website will be the place to go when it is fully up and running and we have events in place for 2021. Do have a look when you have time. And stay safe

*Sue Dawes*

## THE NATIONAL GARDEN SCHEME

Allison Walter, County Organiser for Shropshire, sent an email thanking all the garden owners and visitors for their support in 2020. It was a tough year in which to raise

funds for charities, but despite the limitations the county group raised about 40 percent of their income in normal times.

You would expect gardeners to be looking ahead and planning, and Allison reports new garden owners coming forward to offer their places to welcome visitors in 2021. She lists 25 gardens able to accept parties and a visit to [www.ngs.org.uk](http://www.ngs.org.uk) will give you the list but not the dates. Even better, she has a grand total of 67 gardens listed to open next year. And these places are just lovely to visit - even to a non gardener like me.

The Clarion loves good news, and here's the first example for the New Year.

*JR*

## THE CREATIVE WRITING GROUP

Our response to the lockdown was to bring the date of our November meeting forward from the 9th to the 4th. With some members booked already, we had an attendance of just three and it was a pleasure to meet Viv Kerry, who travelled down from the Hill with Marian Rees to beat the ban of movement by the skin of our teeth.

Subject to coronavirus being under reasonable control, we meet this month at 6.30 on Monday the 14th, when mince pies and a little wine will accompany our words on the subject of 'Lockdown'. It should be interesting to hear what members think about it.

## A PERSONAL GREETING

Brian and Valerie Carter would like to wish all friends

and neighbours a good Christmas and a happy, healthy New Year. As we are not doing Christmas cards we will donate to the Royal British Legion Poppy Appeal. And our best wishes to all our friends at Doddington Friendship Club.

God bless everyone.

*Brian and Valerie*

## AND ANOTHER

Sheila Whitefoot would like to wish family and friends a Merry Christmas and a happy New Year in 2021.

God bless you all.

*Sheila*

## WHOOOPS!

Apologies to all involved with the Neen Savage 2020 book that we reviewed in the November 'Clarion'. For reasons not at all clear (which is another way of saying the editor can't find someone else to blame) we gave out some wrong names as places to pick up a copy.

The actual outlets are the library in Cleobury and The Larch Barn, which should be open again from December 2nd, subject to governmental instructions. It's worth saying again that it is a well researched and written work and at £10.00 jolly good value for your money. JR

## SILLY BITS

**A country parson came across two men playing cards for money on a Sunday afternoon and asked "Don't you know it's wrong to be gambling on the Sabbath?"**

**"Oh yes, vicar, I certainly do," replied one man. "But believe me, I'm really paying for my sins."**

**Professional. Affordable. Local.**



### Electrical Installations

No matter the size, we can gladly undertake all Domestic, Commercial and Industrial installations you require.

A family run business, with over 25 years industry experience.

From period properties to agricultural solutions, we provide a professional service every time. We also do call outs and emergency work.

### Renewable Energy

Protect yourself from rising energy bills by considering renewable energy.

Solar PV is the most accessible way you can save energy by producing electricity from the sun. Earn a tax free income from the electricity your system produces.

Speak to us about how renewable energy can benefit you or your business.

**Whatever your query, give us a call.**

**T: 07971 096267 / 08450 564173**

**W: [www.awe-services.co.uk](http://www.awe-services.co.uk)**

**Two Staks, Eagle Lane, Cleobury Mortimer, Worcs. DY14 8RA**





## BIRCH HILL DOG RESCUE

It's tucked away at the end of a long drive from the Neen Sollars road, three quarters of an acre of land and a collection of buildings devoted to caring for dogs. It has a very special history, having started as a boarding kennels in the 1980s before Jutta and Terry Patterson took over in 1996. They offered boarding and a rescue service at first, but the need to help innocent animals that had been mistreated moved Jutta so much that she gradually ran down the boarding service and gave all her time to the rescue version.

Jutta's policy was not to have any dog destroyed, unless it was very ill and beyond recovery. That is still the policy, when Birch Hill is a registered charity with a charity shop in Worcester that opened in 2010.

Today Andy Jones is the warden with responsibility for running and maintaining the place. Coming from the building trade, he's the right man to deal with jobs like putting the new office and hospitality unit up, where prospective owners can meet the dog that may become part

of their family - provided the people pass a home inspection and are sure they can get along with what may be a very nervous animal if it's had a hard life. They can have the dog at home for a trial period to see if they are all compatible. Overly fussy? No, just a careful professional approach.

Helping Andy when we called was charity trustee Lynn Millward, who's known the charity for a long time and does admire its good reputation and simple compassion. There are volunteers who will walk dogs along the local footpaths and then muck in on any other jobs that need doing. And when we wanted someone to pose with one of the dogs, full time staff member Keelie stood in.



*Keelie with Patch, a lively eight years old looking for a home.*

The kennels have a capacity of 24 dogs, all with their own space and given a thorough health check and all necessary injections, neutered and wormed, before they leave. The demand for canine companions in the recent lockdown has increased, and Birch Hill was only half full when we called in November. They have not been tempted to take dogs from abroad, simply because health records are not always clear. No exceptions - it's that matter of good standards again.

Birch Hill is facing a stable future, with a 30 year lease signed on the building and land, a lovely rural location and a high demand. They welcome volunteers who want to work with dogs and Andy would welcome volunteer tradesmen who would help him get the place in better order. It's hit a rough patch when a fraudulent company took a lot of money for advertising - people went to jail. They're not likely to get much if any of the money back, but determination will get them through.

They're on 01299 270406 from 10.00 to 3.00 each day or email [birchhilldogrescue@gmail.com](mailto:birchhilldogrescue@gmail.com).  
Good people. JR



*Claire Bradley*  
*Floral Designs*


Florist for all occasions, specialising in wedding and funeral flowers

Winner of the Matrimony Award 2020 Best Wedding Florist  
Nominated for 2021 Matrimony Awards

Christmas workshops available

Email: [clairebradley1@icloud.com](mailto:clairebradley1@icloud.com)  
01299 270415 or 07980 580770



*Natalie Taylor* Dip CFHP MPS Pract.

**Specialist Foot Health Practitioner**

Specialising in:-

- In-growing toenails
- Fungal infections
- Nail trimming
- Verrucae
- Calluses
- Corns

All from the comfort of your own home.

If you would like to make an appointment, please call on **07779 113982 or 01584 890112**

# CLEOBURY MORTIMER PARISH HALL

EXTENSIVE WORK ON THE HALL HAS NOW BEEN COMPLETED (SEE ARTICLE ON THE OPPOSITE PAGE) AND WE LOOK FORWARD TO OPENING OUR DOORS AND WELCOMING YOU FROM DECEMBER 2ND, SUBJECT TO GOVERNMENT ORDERS.

---

To book the Hall, please contact Jan Short  
on 01299 271070  
or [janetshort78@btinternet.com](mailto:janetshort78@btinternet.com)

---

**THE TOWN'S BEST VALUE VENUE**

---



**Care at Home** are a family run business providing care services to Cleobury Mortimer and the surrounding areas.

We are rated '**Outstanding**' by the CQC and our care services are tailored to your needs to allow you to continue living independently in your own home.

For more information please call 01299 272897 and we can send you our brochure or visit our website [www.tlccareathome.com](http://www.tlccareathome.com)

## **THE PARISH HALL - EVEN BETTER**

Having lived in Cleobury since 1978, I have seen one building develop and improve a great deal over the years. It's the Parish Hall, originally built in 1892 as the Oddfellows Hall and taken over as the Parish Hall in the early Post World War Two years.

At first acquaintance it was not at all impressive, an old place that had seen better days and needed a bit of TLC. But it was well used, the biggest available hall in town that could host your wedding party or a Saturday night dance or disco that might get beyond rowdy if enough young men had been up to the bar a few times. Not that it had a bar like it boasts now, more likely a table. Cleobury was not a sophisticated place then and the Parish Hall matched it.

A recent visit to photograph the new stage and take a look around was quite an eye-opener. Over the years I'd seen the new kitchen, the toilets updated, the new windows and curtains and even a new floor and a lowered ceiling, but a walk around offered a very pleasant surprise at the state of

one very busy local facility that rightly boasts "The Town's best value venue."

It was painted last year and looks smart. The new stage, the work of Tim Clare and given a coat of varnish by Paul Carter, stands out. And what used to be the Ladies facility has been moved into a new extension along with the disabled people's toilet, while the old place is now storage for Cleobury Concert Brass, who use the hall for their practices.



*A brand new stage dominates the western end of the main hall.*

Everyone who's been to see 'Flicks in the Sticks' will know about the up to date projector and screen that makes those great value for money

evenings go so well. Life will be better when we can enjoy them again.



*A new extension houses the Ladies and disabled facilities.*

What few visitors see is the tidy backyard, where there's just the fence to be replaced to make it perfect. Access for oil deliveries is now simple, with a reasonable neighbour in the old Court House.

There have been roof repairs done and possibly more in the future when the place is in full use again. Old buildings need proper maintenance and its to Val Breakwell and her committee's great credit that this one is looking good and ready to serve our community for a long time.

JR

**\*Beauty Therapist**

**\*Nail Technician**

**\* Contact Toni on;**  
-Facebook/Instagram  
-Toni.w.beauty@gmail.com  
-07814188955

**\* 4 Load Street, Bewdley  
DY12 2AF / Mobile Service Available**



 **TWBeauty**

 **t\_w\_beauty**

**Offering a range of;**

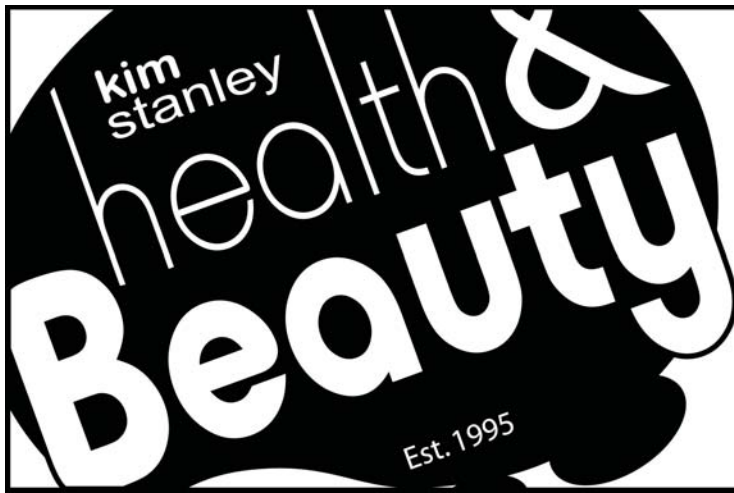
**\*Acrylic Nails**

**\*Gel Nails**

**\*Waxing**

**\*Eyelash and Eyebrow Treatments**

**\*Massage**



**Kim Stanley**  
30, High Street  
Cleobury Mortimer  
Shropshire  
DY14 8DQ



**Tel. 01299 271800**

[www.kimstanley.co.uk](http://www.kimstanley.co.uk)



## **CLEOBURY MEMORIALS**

**(Part of Cleobury Funeral Directors)**

- \* New Memorials & Cremation Tablets
- \* Restoration & Repairs To Existing Stones
- \* Additional Lettering & New Inscriptions
- \* Grave Care & Maintenance



Our Mason is an accredited member of the British Register of Memorial Masons with a City & Guilds Qualification in Memorial Masonry. He is also a BRAMM licensed memorial fitter.

**8-9 Talbot Square, Cleobury Mortimer. DY14 8BQ**

**Telephone: 01299 272963 or 01299 540541**

## **John Brazier & Co**

Accountants & Business Advisors

Accounts – Company, Partnership and Sole Trader  
Tax Returns – Corporation Tax and Personal  
VAT - Returns and advice  
Payroll Service including RTI

For a personal and  
professional service

Contact John Brazier or Sarah Morgan to discuss your requirements on 01299 271473 or email at [info@johnbrazierco.co.uk](mailto:info@johnbrazierco.co.uk). Alternatively, you can arrange a meeting at 53, High Street, Cleobury Mortimer, Worcestershire DY14 8DQ

01299 271 473

## **Happy Harman Free Range Turkeys**

**Orders now being taken for Christmas**

Keep it local

Anthony Harman

07779239393 or 01746 718945



## A NEW FACE ON THE COUNCIL

Two recent vacancies on the Town Council were filled by interviewing applicants for the jobs. The selected pair were Guy James and John Greaves and we thought you should get to know them. First up is Guy James; John in the next issue.

"We moved from Newark in Nottinghamshire in 1984, first living in Kidderminster but we didn't settle, so moved to Cleobury for a less urban existence. Best decision we ever made."

To bring us up to date, how did the selection go?

"I was interviewed and they asked me why I wanted to do the job. I had no personal agenda driving me, it's just that I've enjoyed living here for 34 years and I wanted to put something back."

"I must say I've been very impressed by the professional standard of the way the town is run and I'm delighted to be involved. There's a lot more work than I expected, with emails coming through every day. The experienced councillors are doing lots of work that people don't know

about. And I must say that I have a very high regard for the job Matt does as the Town Clerk; he's so approachable and has a very good manner with the younger people. He really is a very good indeed."

Guy and wife Maggie moved here with their three sons, he working as a surveyor with a large company and expecting to complete his work life as an employed person. Then along came the big financial shake-up of 2008 and he was made redundant, along with many others. He opted to be self employed and admits that it was a very sharp learning curve: "All the jobs you could hand over to a specialist in a big company, I found I had to do myself. It was darned hard work."

But he succeeded and two years ago retired and decided to spend more time with Maggie and their widely spread sons in Tenbury Wells, Edinburgh and Norwich.

So how much time does council work take up at this early stage? "Four to five hours a week, I'd say. There's a lot of reading to be done and as much of the work is new to me, you can't skim read. The

man is clearly not one of the 'nodder through' brigade who don't pay attention to the job they've agreed to take on.



*That's a good sign - after realising how much work there is Guy's still smiling.*

He takes an interest in the fringe matters that the Council has an involvement in. A good example is the Acorns and Oaks project, which has clearly touched Guy's imagination. "I've got two beds in the garden with 150 acorns growing in each, to help the planting in the future."

"The outstanding things about life in Cleobury is the community spirit. It's a really great strength and makes you feel you want to be part of it."

**A. Farr Painting & Decorating**

Give your home a beautiful new look....

Contact:  
andyfarr12345@gmail.com 07815 855340

**Guitar Tuition**

Experienced tutor based in Stottesdon  
Teaching for 25 years privately and in schools  
One to one lessons. Exams available  
DBS checked, full liabilities insurance  
All ages, styles and abilities welcome  
Contact Mark for more information @  
MARK.CHECKLEY@sky.com  
01746 718636 - 07708 386433

Here By You is a support and companion service offering company and accompaniment in and outside of the home. My name is Leah. I am caring, reliable and trustworthy. I can provide support and help to anyone needing assistance. I charge a reasonable hourly rate and cover Cleve Hill and the surrounding areas.



Services may include:  
 Accompaniment in or outside the home. Or maybe staying with a loved one to provide respite.  
 Meal preparation, lunch or tea.  
 Assistance with paperwork of any kind.  
 Light household duties



Accompaniment may include:  
 Shopping trips, drive out, lunch out. Medical appts. etc.

Please note I offer a support and companion service. I am unable to provide 'personal care' for individuals.

Covid guidelines adhered to. DBS checked for your piece of mind. References available.

Leah Tel: 07738 659225 or 01584 891397

Email me at: Leah.herebyyou@gmail.com

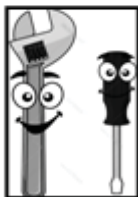
# MAWLEY OAK GARAGE & TRAVEL

*Mawley Oak Garage is an established and family run Garage since 1980 We focus on providing a friendly and reliable service at a competitive price.*

## Mawley Oak Garage

FREE Diagnostic check with every full service  
 MOT & Oil service Starting from £99\*\*

MOT, Repairs & Servicing, Exhausts,  
 Tyres, Cam Belts, Laser Wheel Alignment,  
 Clutches, Shock Absorbers, Diagnostics,  
 welding, electrical faults



\*Local collection & delivery service.  
 \* Subject to availability and Conditions apply  
 \*\* Prices vary depending on make and model of car,  
 call for a free no obligation quote

## Travel

16, 24, 28, 32, 49, 51 & 53 seat vehicle's

\* Airport Transfers \* Weddings \* Day trips  
 \* Theatres \* Sporting Events \* School trips  
 \* Dog & Horse Racing \* Nights out

Call or email now For your free no  
 obligation Quotation

**Call : on 01299 270207**  
**Email now enquiries@mawleyoaktravel.co.uk**

**Telephone our today and either Ask for the workshop or travel**  
**01299 270207**



# Mannerly Mutts

Dog Behaviour, Training, Walking and Sitting

-  Behavioural Consultations
-  Training Classes for Puppies & Adults
-  One to One Training
-  Fully CRB Enhanced Checked
-  Walking, House Sitting, Home Boarding
-  Home Security



**www.mannerlymutts.co.uk**

jo@mannerlymutts.co.uk 01299 270514



## The Clarion Jobs Page

### We're Hiring Healthcare Assistants!

- Does your current job fill you with pride and the knowledge that you made a real difference to someone else's life today?
- Are you looking for job security and to work for a growing, reputable company who invests in their staff by offering plenty of training and development opportunities?



**CM BESPOKE CARE LTD.**

CM Bespoke Care is the leading home health care provider working across Shropshire and Worcestershire. We've adopted a nurse-lead, client-based approach to home care and our carers are some of the very best in the business.

Due to our continued growth we have several new Healthcare Assistant roles available (full and part-time). We're looking for;

- Caring and compassionate people to join our fabulous team
- People who have their own transport and a current driving licence
- People aged over 18 years old due to regulatory standards

To find out more call **01746 718 816** and speak to Ian or Emma or email Emma at [emma.yeomans@nhs.net](mailto:emma.yeomans@nhs.net). We're ready if you are!



**Jamie Stubbs - Home Manager**  
**Capulet Care**

Cleobury Hills, High Street, Cleobury Mortimer, Kidderminster, DY14 8DN

☎ **01299 271982 ext 1383**

✉ [homanager@cleoburyhills.co.uk](mailto:homanager@cleoburyhills.co.uk)

### Job Description

We are currently recruiting for a Full Time Head Housekeeper, to join our team within a brand new purpose built care home in Shropshire. You will be a key part of a growing social care business, tailoring specialist residential care to people living with dementia and other mental health/complex needs. As a Head Housekeeper you will manage a team of Domestic staff, including the laundry department, to maintain a high standard of cleanliness and hygiene within the care home.

The position is Full Time (40 hours per week), working 5 days per week out of 7, to include occasional weekends and bank holiday cover.

#### Key Responsibilities:

- Implement cleanliness and maintain high levels of Hygiene & Infection Control in all areas within the building, plus monitoring & providing feedback to all staff and management.
- Organise weekly & monthly departmental rotas and prioritising workloads by ensuring staff adhere to it.
- Conduct and carry out regular audit checks, as per Company Policy.
- Train and support new staff within their job roles, as per Company Training guidelines.
- Perform departmental supervisions and manage staff performance.
- Report directly into the Hotel Services Manager and liaise with the Care Home Manager on day-to-day issues.
- Perform regular checks for Health and Safety issues and promote good Health and Safety practices throughout the building.
- Implement Company Policy & Procedures to all Laundry and Domestic staff, including Emergency and Fire procedures.
- Report Maintenance issues to appropriate departments.
- Attend mandatory training days/courses on or off site when required.

Job Types: Full-time, Contract, Permanent

Salary: £19,250.00 per year

# Firewood

Seasoned logs, barn dried & ready to burn.

Free local delivery -01584 890993 or 07970878224

Various size loads available



Paul Harding Tree Services



## Flowers By Fiona *est 1991*

Fresh Flowers made to order

Special Occasions

Weddings, Anniversaries, Birthdays

Sympathy Tributes

19a High Street,  
Cleobury Mortimer

Tel: 01299 272 995

RWS

R. Weavers  
Services

## Stove Installations, Service and Repair

- All solid fuel wood burners and boilers supplied and installed
- Chimneys relined and twin wall systems built
- Chimney Pots, Cowls, Carbon Monoxide alarms and Air Bricks fitted
- All Stoves and Fires serviced including chimney sweep
- Hetas Landlord Safety Certificates

Tel: 01299 272712 Mbl: 07807 343006

email: [info@rweaversservices.co.uk](mailto:info@rweaversservices.co.uk)



### PODIATRY/CHIROPODY

Debby Luxton. HCPC Registered

Treating and Caring for Feet  
General and Specialised  
(Verruca and Fungal Nail)

[www.ludlowpodiatrist.co.uk](http://www.ludlowpodiatrist.co.uk)

We are both highly qualified, very experienced and absolutely dedicated to providing our patients with the best quality care in our respective disciplines.

We have many testimonials from patients, some are on our websites and a couple to the right.



Hollyoak  
Health

Middleton | Ludlow | SY8 3EF

T: 01584 823331

### OSTEOPATHY

Ian Luxton. GOSC Registered

Treating Pain and Injury  
Acute and Chronic  
Head to Toe

[www.ludlowosteopath.co.uk](http://www.ludlowosteopath.co.uk)

"I'm now free of discomfort due to the excellent and wholly appropriate treatment you have given me."

"We have greatly appreciated your attention and trusted your advice."



## **MORE ABOUT ACORNS**

**Kit Smith follows up on last month's news about the Great English Oak.**

This year has been a massive mast (woodland term for bumper. *JR*) year for our oaks. They have produced millions of acorns, but by now almost all of them have disappeared; eaten by squirrels, birds, cattle or scumped by a small band of human acorn harvesters. They have collected over 1500 Cleobury English Oak acorns. Most are now in nursery beds, pots in greenhouses or stored in a fridge.

Last month they advertised in the Clarion that they were giving acorns away to anyone in the community who wished to be part of the 'Plant a Tree in '23' project, so they could start the acorn germination process in their own homes. Covid lockdown made them postpone the four Saturday mornings in November by the Market Hall. However, they be there 9.00 to 12.00am Saturday December 12th, if Covid precautions allow them to do so. Attendance at a Pre Christmas Farmers' Market is a possibility. They will have information and acorns in plenty, even if their smiles are properly covered with a mask and shield. *Kit Smith*

## **THE READING GROUP**

I opened the box, delivered to Cleobury library from Shrewsbury, hoping for a set of good novels or non-fiction. Immediately I could hear

virtual, as most things are these days, cries of "Not more poetry", having read a similar selection in February.

In our group we have one poet plus one fan of this media, I'm afraid to say the rest of us are indifferent. I made an adventurous choice, 'Sex and Love and Rock n'Roll' by Tony Walsh. Language rather blunt at times but I appreciated the author's ideas and found some verses quite moving. A few others did take a book, though little enjoyment seems to have been found. With Cleobury library closed at present I was informed that I could collect our next books from Ludlow. This went smoothly and I am now distributing copies of 'The Bees' by Laline Paull which we will discuss during December.

With luck our local library will be open again soon, it is missed. We are too big a group to meet unless circumstances change, I'm delighted that all seem keen to carry on, with views exchanged on line.

Best wishes to all for a happy Christmas.

*Deana Kimber 271754*

## **SHOEBOXES FOR EASTERN EUROPE**

Like everything this year, our Shoebox collection has been made much more difficult to organise, but as always you all rose to the challenge.

I am delighted to say that we have sent 897 shoeboxes, which is way more than I dared hope. Thank you to all the wonderful people who came to my house, when we were allowed to, and helped fill those boxes. It was such a

shame we could not do our normal sessions in the church with the help of our local Guide and Scout groups. We had so many great donations of all sorts.

My thanks go to you lovely people behind the scenes to make the fantastic total which I know will make 897 poor children so happy when they receive their shoe box. As you know I have been on five trips to hand out shoeboxes over the years and to see the happy faces of the children has never failed to move me. I am sure the children will send you a big thank you.

*Jenny Vanderhook*

## **TELEPHONE SCAM**

It can be a busy phone in the Clarion Towers office on occasions. In mid November came a call from an 0207 number that told me in firm tones action was being taken to prosecute me for non-payment of income tax. If I wanted to prevent this happening, I was to press Number One on the dial.

It was a recorded message, because my much less than polite response got no reply and I put the phone down, knowing that such a crude approach would not bring the wrath of Her Majesty's Revenue officers down upon my head and bank account.

But it was a reminder that the nasty little people who want to rob you never give up. Nigel Reid's "Let's Beat the Scammers" is a valuable guide to all who read it and we are getting questions and feedback on the subject. Fraud like this takes billions of pounds from innocents. Avoid.



# Bumperscuff Rescue

- Body Shop excellence
- Home convenience
- Cost effective car body repairs!
- Bumper scuffs
- Paint scratches
- Kerbed alloy wheels
- Small dents

Free no obligation quotes, all work fully guaranteed Call **Andy Taylor** now on **07834 322216** or visit **www.bumperscuffrescue.co.uk**

## CLEOBURY MORTIMER CARPETS

### Supplying and Fitting of:-

- Carpets
  - Natural floorings (Coir, Sisal & Seagrass)
  - Vinyls
- Carpets supplied by: Victoria Carpets, Fibre Flooring & Alternative Flooring at Unbeatable Prices

### Contact Details:-

Address: 26 High Street  
Cleobury Mortimer •DY14 8BY

Telephone: H: 01299 270095  
M: 07739 186163

Email: [garethleach@aol.com](mailto:garethleach@aol.com)  
or check out our new website  
[www.cleoburymortimercarpets.co.uk](http://www.cleoburymortimercarpets.co.uk)

## INFINITE ELECTRICAL SOLUTIONS

For all your electrical needs:

House rewires

Fuse board upgrades

Electric showers

Need an extra socket or light installed?

No job too small



For a FREE quote  
Call Lloyd 01584 811184



## TIME TO CLEAN YOUR OVEN? LET US DO THE JOB YOU HATE

AS SEEN  
ON TV

- Ovens
- Filters
- Hobs
- Grills
- BBQs
- Ranges
- Extractors
- Microwaves
- AGAs

Call or go online today for your free estimate

**OVENCLEAN**  
The original oven cleaning specialists

07913 123543  
[ovenclean.com](http://ovenclean.com)



## Stepping Out! Who's Walking, When and Where.

### THE FOOTPATH ASSOCIATION

The Footpath Association wishes you a very Happy Christmas and hopes for a healthy New Year. Just a reminder that our guided walks programme is still on hold.

The CMFA has been busy despite the virus. We held a virtual AGM and happily all our officers have been re-elected to serve into 2021, while work on our footpaths goes on plus we have moved into the 21st century in offering our walk leaflets on a mobile phone app that uses GPS to keep walkers on track. See below.

#### Footpath Maintenance

We were able to get one work party in before lockdown in November. This was the installation of a kissing gate at Newhouse Farm, Tenbury Road. We also managed to make improvements to the riverside path in Neen Sollars, moving it away from the river. We have two jobs to try to get done in December, if the lockdown ends.

The most important is to deal with the missing footbridge (floated away!) on the Simon Evans Way at Reaside. A rotten

plank bridge also needs replacing in Common Lane.

We will restart work in March. We already have a list but if you would like to tell us about any problems or needed improvements, please get in touch.

We have had requests from dog walkers about making stiles more dog friendly. We are a very small group of volunteers and only have resources to work on stiles which are in need of attention because they are unsafe. We try to replace them with gates where possible. We can't do that, or put dog gates in, without landowner permission, which isn't always given due to the problems farmers have with dogs off the lead. We would very much welcome dog owners and anyone else, of course, to join us and help in our valuable and much needed endeavour. Work parties are organised approximately once a month for a morning's work. No experience necessary, just a willingness to help CMFA keep our footpaths among the best in the county.

Please contact Susan Sharp at:  
Footpaths.cmfa@gmail.com

#### Walk leaflets on a phone App

We are pleased to report that 19 out of 24 of our walk leaflets have been completed on the ViewRanger Mobile App. They include written waypoint directions to enable ease of use.

Thanks to David & Liz Walker, who have done an excellent job of walking the routes to map them.

ViewRanger App details of registration/login etc will be shown shortly on the CMFA website <https://www.cmfa.co.uk/> where all our walk leaflets are already available as PDF files.

If you have a go at using ViewRanger for our walks, please let us know how you get on via [feedback@cmfa.co.uk](mailto:feedback@cmfa.co.uk)

Graham Simpson

#### ROCK PATHFINDERS

Sue Humphries advises us that the Pathfinders had a walk out of 18 members in September but until the lockdown situation is clear they have no further outings planned.

For that reason they are not inviting non-members to join them, but will progress gently and keep everyone informed through their excellent website and the Clarion. JR

## MIKE AND SHELLEY ROBERTS

### Haulage Contractors

### Supplier of Aggregate and Asphalt products

12 Lacon Close, Cleobury Mortimer DY14 8EF

**07860 669350**

**07966 045012**



### Domestic oil-fired boiler breakdown & maintenance services.

27 years' field-service experience with leading UK boiler manufacturer Worcester Bosch.

**Donovan Taylor**

**Tel: 01299 828670 or 07807 837040**

[donovan.taylor@sky.com](mailto:donovan.taylor@sky.com)

[www.greenstar-boiler-repairs.com](http://www.greenstar-boiler-repairs.com)

Caring about your environment and providing an honest, professional & reliable service you can trust



Soft furnishing and  
Interior Design Services

## Masquerade

Fabrics Limited

01299 271 680

36 High Street Cleobury Mortimer near Kidderminster  
Worcestershire DY14 8DQ

Retailers for Sanderson, Harlequin, Monkwell  
Crowson and many more...

Comprehensive design, measuring and fitting service.

## FALCO HEATING

The Solid Fuel Specialists

**GARY HARDING - HETAS**

registered

Old Hall Farm

Clows Top, Worcs. DY14 9HE

T: 01299 832030

M: 07896 685 947

[FalcoHeating@gmail.com](mailto:FalcoHeating@gmail.com)



**A.B. Plastering**  
Plus Traditional Lime Plastering

**Adrian Booton**  
PLASTERER

4 Severne Green, Bayton  
Nr Kidderminster, DY14 9LL

Tel: 01299 832 838

Mobile: 07974 582 524

### Maths & English Tutor

for 4 – 9 year olds

- Lessons fun & practical
- Lessons tailored to your child's needs
- Thorough assessment before lessons start

Please ring Sarah

patient, encouraging & positive

0782 635 0334 or 01299 213 105

DBS checked

20 years experience working with children



## COUNTRY SKILLS

CPCS/NPTC Approved—fully insured

- Outside Renovation
- Tree Surgery, Hard Landscaping
- Slabbing and Fencing
- Decking, Roofing
- Contract Mowing

Call for a free quotation

R. Price & Sons

Mobile: 07967 140720 Email: [roger@country-skills.co.uk](mailto:roger@country-skills.co.uk)



## Hobbs Building Services

EST 25Years.

A Total Plastering, Maintenance and Building Service for your home,  
business and outbuildings.

Insurance work undertaken

Emergency call out service for general plumbing, roofing, boarding up damaged doors and  
windows. For a free quote please call;

Ian on; 07967190742

Email: [hobbsbuildingservice@yahoo.co.uk](mailto:hobbsbuildingservice@yahoo.co.uk) Or Call/Text Kelly on; 07790085307

**A CHILDREN'S  
CLOTHES  
CO-OPERATIVE**

Neen Savage and Cleobury Mortimer WIs are joining together to offer a Children's Clothes Co-Operative. The idea is that people can donate nearly new children's clothes which will then be laundered and if needed, repaired by the ladies of the WI. They will then be offered to anyone in the community. Initially donation points will be the Market Hall and Ever After Nursery and items will be available to collect from the Market Hall on Thursday afternoons from 3.00 to 4.00pm and Friday mornings from 9.30 to 11.30am, starting from 3rd December.

January dates will be Thursdays 7th, 14th, 21st and 28th 3.00 to 4pm and Friday mornings 8th, 15th, 22nd and 29th, from 9.30 to 11.30am

We think this is a great way to share the love in our community and hope people will join in by both giving and receiving.

*Catherine Evans*

*What a great idea. Congratulations to all in the two WIs for such original thinking.JR*

**THE HALF DEAD  
POETS' SOCIETY**

That's a big title for an October meeting that drew only two members. Illness and injury kept the others away, so the editor and David Walford sipped a glass of wine and shared works by Spike Milligan, Roger McGough and some of David's beautifully expressed own. With just two people meeting, we should please the government if nobody else. This month we meet on Tuesday the 29th and in January on Monday the 25th, 7.30 at the library, as usual.

**NEW BENCH  
INSTALLED**



*The very smart new bench in place by the footpath through the Millennium Park. All work by Mark Pearce.*

A very comfortable new bench has appeared at the lower end of the Millennium Park. The Bench is in memory of two members of the Charles Beale Old Time Dancing, Alan Hill and Barney Davies. The group has now ceased operating, but this is the third bench in memory of some of the long time members over the years.

Thanks go to Betty Ladek for enabling, and Mark Pearce for making and installing it.

*Madge Shineton*

**CLEE HILL COACH  
TRIPS**

Mrs Gregory's very popular monthly coach trips have been another victim of the Covid-19 problem. But she assures us that she's been in touch with the coach operator, who will be running the trips from March, subject to the pandemic situation.

Mrs Gregory herself is to be congratulated on the fund raising she does on these trips, with raffles part of the appeal. She was hoping to raise £5,000 for the Air Ambulance, but ended up with a mightily impressive £4,220, which she handed over to that good cause in November.



**Michael Coombes  
Roofing & Building Maintenance.**

Complete Re-roofing, Roof repairs, Pointing & Chimney repairs.  
Slabbing & Brick work  
Wall & Floor Tiling  
Painting & Decorating

Over 20 Years experience in the Cleobury area.

**Call Michael on 07854 047413**

# Mark Pearce

Landscape, Design and Rustic Garden Furniture

- Fencing
- Garden Sheds
- Patios
- Summer Houses
- Drives
- Fence Panels
- Decking
- Log Stores



And Much More

Top Quality Fully Treated Timber Products

Mobile: 07875425028

Tel: 01746718404

## Robert Bradley Logs

07794 798616



*Seasoned Firewood, Hardwood,  
Softwood or Mixed loads of logs.  
Free Local Delivery*



### Mawley Milk

direct from the cows  
to a shop near you!

We guarantee you won't find tastier fresher milk with so little food miles.  
Early morning doorstep delivery available in Cleobury Mortimer

Like us on Facebook/Mawleytownfarm

Produced & bottled at  
Mawley Town Farm,  
Cleobury Mortimer  
01299 270359

To find your nearest stockist visit our website [www.mawleytownfarm.co.uk](http://www.mawleytownfarm.co.uk)  
email: [info@mawleytownfarm.co.uk](mailto:info@mawleytownfarm.co.uk)

## SKELLERNS

DOORS & WINDOWS



- UPVC Fascias & Guttering
- UPVC Windows, Doors & Conservatories
- General Home Improvements
- Re-roofing & general building work
- Replacement Glass
- Patio Jet Washing



Free No-Obligation quote. FENSA registered company with years of experience

Call Mike on: 01886 812250 or mobile: 07814 577739

[www.skellernsdoorsandwindows.co.uk](http://www.skellernsdoorsandwindows.co.uk)

# KIDDERMINSTER

## SELF STORAGE AND REMOVALS



### STORAGE

Free insurance . Flexible Terms  
Fixed Price Guarantee . No hidden costs

### REMOVALS

Professional Removal Service  
Est. over 25 years

### PACKAGING MATERIALS

Boxes, Bubblewrap, Tape Etc. for sale  
Free local deliveries on orders over £20

**01562 744088**

[www.kidderminsterselfstorage.co.uk](http://www.kidderminsterselfstorage.co.uk)

Unit 11 Finepoint Way, Stourport Road, Kidderminster DY11 7FB  
[info@kidderminsterselfstorage.co.uk](mailto:info@kidderminsterselfstorage.co.uk)

## CLEOBURY MORTIMER SPORTS AND SOCIAL CLUB

LOVE LANE, CLEOBURY MORTIMER, DY14 8PE  
TELEPHONE 01299 271448

### OUR NEW OPENING HOURS:

**FRIDAY: 5.00 to 10.00pm**

**SATURDAY: 2.00 to 8.00pm**

**SUNDAY: 12.00 noon to 8.00pm**

**WITH SOCIAL DISTANCING  
AND A WARM WELCOME TO THE  
BEST PLACE TO BRING YOUR FAMILY.**



## Home Support Services

All staff enhanced DBS checked with over 20yrs experience and training within the local authority/social services mainstream and dementia care sector. Fully insured.

### Are you in need of support with the following basic day to day tasks?

Assistance during the day or night

Companionship

Shopping/Household tasks

Completing Forms

Pet Care

Attending social events/ appointments

Contact Liz

Tel: 01299 271623

Mob:07826 929222

[liz@lifelifeathome.co.uk](mailto:liz@lifelifeathome.co.uk)

Other support services available on request.

[www.lifelifeathome.co.uk](http://www.lifelifeathome.co.uk)

Contact Tracey

Tel: 01299 211660

Mob:07957 659909

[tracey@lifelifeathome.co.uk](mailto:tracey@lifelifeathome.co.uk)

## BILL'S QUALITY METALWORK

5 GREENFIELD ROAD, CRAVEN ARMS SY7 9QU

Manufacturing Made to Measure Gates and Railings,  
Balconies and Staircases, Handrails, Carports, Structural Steelwork  
and Mobile Welding Service.

Phone Bill on 07973 248 016 Mobile or 01588 673 914

Office for a free quote



## Electrical & Security

Tel: 07973 112463 (Anytime)

01299 489223



- Full/ Part Installations
- Existing System Updates
- Alarm & Security Systems
- PAT Testing
- Domestic and Commercial Properties
- Electrical Problems
- Landlords & Electrical Safety Certification
- Upgrades
- Free Callouts and Quotes
- For Existing and New Installations and Security.
- Part P + Full Scope Registration
- Card Payments Accepted



**Fast Friendly Service, No Job Too Small**



## FOR ALL YOUR ACCOUNTANCY REQUIREMENTS

[www.fairway-accountants.co.uk](http://www.fairway-accountants.co.uk)

Head Office: 01299 822283  
[team@fairway-net.co.uk](mailto:team@fairway-net.co.uk)

Simon Hector: 07896 439594  
[sjh@fairway-net.co.uk](mailto:sjh@fairway-net.co.uk)





## **Philip Dunne's Letter from Westminster**

### **Christmas in the year of Coronavirus**

It feels very strange to look back to a year ago – a December in which we had just had a General Election and where nobody had heard the term coronavirus – and compare it to today.

None of us could have expected 2020 to turn out the way it has. I know it has been remarkably difficult, and my deepest sympathies lie with anyone who has lost a loved one or a friend to this dreadful virus.

All of us have been affected in various ways, but for those who may have lost their business or their job, this has been particularly tough.

Many readers will have been shielding or self-isolating for months during this year. I shared this frustration having been shielding for three months earlier in the year, and then self-isolating during the national restrictions in November. The disruption to our normal daily lives has been severe.

But I am also acutely aware of the great sense of community that has been evident throughout the year, and the way in which local people have banded together to support the most vulnerable in our society – much of which has been led or actioned by the typically generous spirit of local community volunteers and church communities – for which I am truly grateful.

Local volunteer groups sprang up all over South Shropshire, and were vital in the supply of food and medicines to those who could not get out and about. People went above and beyond to support the keyworkers on whom we all relied. Most of us also got to know our neighbours a little better in the process.

At a time of great difficulty and distress, acts of communal faith often bring great comfort. So I am also conscious that, for those of faith, it has been particularly hard to have church services disrupted by a need to forgo gatherings while the virus was spreading in our community.

I know that Christmas services will be different this year, as indeed will Christmas gatherings with friends and family that mean so much, but at the time of writing I expect some form of family gatherings at Christmas are likely to go ahead.

But while Christmas this year will be different for all of us, to my mind, this year has been one in which the spirit of Christmas has been evident nonstop. Those same timeless themes that inspire Christians and non-Christians alike at Christmas every year – charity, family and community – have been the bedrock of the way in which our communities have responded to the worst crisis to face this country since the

So reflecting on the inspirational actions of so many this year, and with positive of both quick testing and possible vaccine breakthroughs, it is with a renewed sense of hope for the future that I look to 2021.

We will get through this, and next year's Christmas will be all the more special, for the challenge we all overcame together.

Happy Christmas and warm wishes for the year ahead

*Philip Dunne*

# The Miah Brothers Famous Spice Empire

*Bringing great taste and value to Cleobury Mortimer for 17 years*



17 High Street, Cleobury Mortimer  
6-11pm 6 Days a Week  
Acclaimed Indian restaurant with  
wide range to suit all tastes.  
Sunday Buffet from 12.00pm-  
9.00pm.  
As much as you can eat for just  
£9.95 a head.  
Free home delivery up to 5miles  
Reservations: **01299 270419**



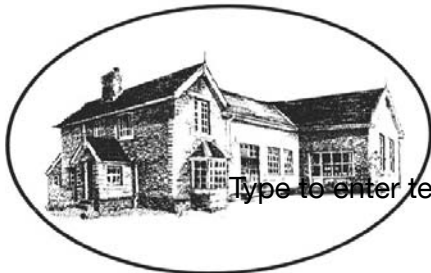
6/7 Church Street, Cleobury Mortimer  
*'Fine bar, excellent food at prices to  
suit all pockets'*  
Top Value dining.  
Our Dine In Meal Deal gives you a:  
starter, main course and naan or  
rice for just £9.95.  
Tuesday to Sunday, 6.00-11.00pm  
Reservations: **01299 271485**



57 High Street, Cleobury Mortimer  
6-11pm Wednesday- Sunday  
Dine at home with the same great  
quality our restaurant offers.  
Monday- Tuesday  
collect Takeaways from  
Spice Empire:  
Tel: 01299 270419  
Free home delivery up to 5miles.  
Orders: **01299 271604**

## Bayton Church of England Primary School

*- Be the best you can be, as a child of God -*



Type to enter text

[www.baytonceprimary.co.uk](http://www.baytonceprimary.co.uk)  
01299 832393  
[office@baytonpri.worcs.sch.uk](mailto:office@baytonpri.worcs.sch.uk)

Call or email to book an appointment to  
visit our school and meet our staff.

*"We offer an alternative and unique Primary  
School experience, in an idyllic rural setting.  
A small family-orientated school with a caring  
ethos and traditional values, coupled with excellent  
results. If you want the very best for your child,  
come and visit us."*

*Ms. Jolanda Simmonds  
Head Teacher*

*\*Spaces currently in Years 4, 5 & 6, and we are also  
welcoming Parents & Carers of September 2019 intake.  
Governor vacancies – please call for information\**

Rated "Outstanding" in our latest SIAMs inspection (March 2018).

Friendship – Hope – Perseverance – Compassion – Trust – Forgiveness – Responsibility – Respect – Truthfulness

Our school vision: We aim for everyone to be a part of our community, be life-long learners who are confident. enthusiastic. valued and reach their God given full potential.



# Cleobury Community Hub

Believe it or not, the Community Hub has now been open for over a year! A massive thank you must go to all our volunteers, financial supporters, grant giving trusts and with equal importance you, the Community who come and share time (and coffee) with us. 2020 has been a very challenging year, but we are grateful to have shared the year with the fantastic Community of Cleobury Mortimer.

## News and Events

As we all know, the current climate means plans quickly change! Days after November's update inviting you to come and sit in for a coffee, we quickly altered to an invite to come for a takeaway. Although we have missed having a good chat it has still be great to see you and help with your caffeine (or cake) needs. The Mawley Milk refill has also remained popular.

With great excitement we can announce we have now raised enough funds for our bespoke indoor climbing wall. This will be a great asset for our work with young people, and also fun for all ages! As always thanks must go to a range of organisations and trusts that have been so generous with finances, and to you the community in supporting our next endeavour, we are super excited to share it with you soon...work has already started!

Like it or not, Christmas is just around the corner. Taking inspiration from the fantastic scarecrow trail that the whole community got involved in, we are holding a Nativity trail running between 19<sup>th</sup> and 23<sup>rd</sup> December. This will involve following a trail of stars around the town and some Covid-safe activities at the Hub. We're finalising the details so keep an eye on social media to see the final plan.

Our plans have always had a fluid nature, responding to needs and opportunities in and around Cleobury, even more so in the current climate. Some restarts of our regular events are back on hold due to the latest restrictions, but please do keep in touch to and continue to be connected and involved. The Hub has always had its roots in community collaboration, therefore any ideas or suggestions are always welcomed.

Thank you once again for your support and involvement with the Hub, and we look forward to seeing you again soon.

FB @CleoburyCommunityHub / Insta @saintmarysyoungproject



### CLEOBURY COMMUNITY HUB - WEEKLY CALENDAR

- **MONDAYS - CLIMBING CLUB**
- **TUESDAYS - CCH COFFEE SHOP**  
**OPEN 10AM-5PM**
- **FRIDAYS - CCH COFFEE SHOP**  
**OPEN 10-4PM**

**MAWLEY MILK REFILL STATION AT THE CCH**



## The Lamp Restaurant

15a High Street, Cleobury Mortimer, Shropshire, DY14 8DG

01299 272785 or 01299 271313

Fully Licenced and Air Conditioned

Serving Bangladeshi & Indian Cuisine



**The Lamp Restaurant winner of Currylife award chef of the Year**

Open 7 days a week from 6.00pm until 11.00pm

The Lamp's cuisine, inspired by Sylhet, the second city of Bangladesh, offers a wide variety of choice along with established favourite dishes and a selection of Chef's Specials.

The wide variety of starters and accompaniments chosen by our chef to complement your main course.

Takeaway service offers free delivery up to 3 miles for orders over £15.00.

Find us on Facebook: Lamp Inn Cleobury Mortimer

### Village Help

Do you know someone who is struggling to manage during these difficult times? Do you know someone who finds it difficult to access help and support due to their rural location or social isolation?

**If so, contact Helen, your local Village Help manager for a free consultation on mobile number 075616 05281**

Village Help is a new local enterprise, designed to give practical, social and emotional support to you at home.

I offer a range of services that can be tailored to your specific needs, enabling you to cope better with day to day living at home such as;

- Morning/evening reassurance phone calls
- Social visits
- Escorted trips
- Meal planning/preparation
- Gas/Electric tariff switching
- Light housework/laundry
- Delivery Shopping

I have a wealth of experience from working for Age Uk, Citizens Advice and Retirement Housing. I want to use this experience to enable you live happier in your own home. I look forward to hearing from you to discuss further.

## **CHRISTMAS EVENTS**

CoCo coffee mornings are planned for Wednesdays December 9th and 23rd, 10.00 to 11.30am at the Kings Arms, £1.75 for coffee and cake.

Advent Soup Lunches. Wendy at the Kings Arms has kindly offered to host these for three Thursdays in December. Homemade soup, fresh bread, apple crumble and cream will be served between 12.30 and 2.00pm on December 10th, 17th and 24th for £5 a head in aid of the Severn Hospice. There will also be a raffle each week with festive prizes. A big thank you to the generous businesses in our town who are supporting us with this: The Kings Arms, Ashley's Bakery and Mawley Milk.

Looking ahead to the New Year, January coffee mornings will be on Wednesday 13th and 27th.

Clothes Co-op dates will be Thursdays 7th, 14th, 21st and 28th and Fridays 8th, 15th, 22nd and 29th.

All activities are subject to Covid restrictions in place at the time and will be undertaken in a covid safe manner. Any questions or further information please get in touch.

*Catherine Evans CM270647*

## **COUNTY CAR PARKS FREE!**

In a generous gesture aimed to encourage us all to drive out and shop locally, Shropshire Council have declared that from December 3rd to January 17th parking in council owned car parks will be free from 11.00 am to 6.00pm. If you park earlier in the morning, there will be a charge.

On street parking will still be subject to a charge where this is established already.

## **A BIG THANK YOU**

I would like to thank family and friends for all my Get Well cards. I was taken from the Care Farm at Bayton to Worcester Hospital, as I was not able to eat or drink. I'd like to give Pippa, Martin and the staff at the farm huge thanks,

and to everybody involved in my care. Brilliant!

*Anthony Draper*

## **A VERY CLEVER MOVE**

It was a good move for Tracey when she took her sweet shop up onto the High Street. More profile, more business, good prospects. Then came the pandemic and lockdown; as a non-essential shop she was due to close. Not good news.

So she did a bit of lateral thinking. What could she offer that would make her shop one of those allowed to stay open as an essential source for the community. With no independent fruit and veg shop about, she made contact with fruit growers like Billy at Hopton Wafers and wholesale greengrocers. All of them were happy to have an outlet in the town and almost overnight the place had foodstuffs on display at the front while the sweets and fancy goods were moved back to make space.

It's been a great move, with Tracey sensibly offering open displays that mean people wanting to buy a single item can; no need to buy a sealed bagful when all you need is one. It's no surprise that the place is busy.



**All Aspects of carpentry work undertaken**

**Level 3 City & Guilds in Carpentry & Joinery, 20 years of experience**

**Tel: 07854 032750**

**Email: duncpearce1@gmail.com**

Andrew Jordan (Jordy)  
JRD.GROUNDWORK@GMAIL.COM

Moors View  
Moors Lane, Oreton,  
Kidderminster, Worcestershire  
DY14 8RH



#### AVAILABLE SERVICES

- Foundation & footings
- Concreting
- Driveways
- Ditching
- Drainage
- Landscaping
- General Building
- Fencing
- Hedgecutting
- Digger Hire
- All Jobs Undertaken

*Specialising in Wills, Lasting Powers of Attorney and Probate*



Amanda Weston FCILEX, MIPW



- Approachable and friendly
- Free Will review clinics
  - Competitive rates
- Qualified lawyer as well as a member of The Institute of Professional Will Writers
  - Home visits available

Email: [mandy@westonswillsandprobate.co.uk](mailto:mandy@westonswillsandprobate.co.uk)  
Mob: 07931 411733  
[www.westonswillsandprobate.co.uk](http://www.westonswillsandprobate.co.uk)  
Old Snuff Mill Warehouse, Park Lane, Bewdley, DY12 2EL

@WestonsWillsandProbate  
 @WestonsWills

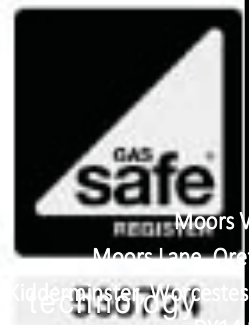
- Over 30 years experience in the legal profession
- Fully DBS checked
- No matter how big or small your query, please call!



## JOHN VAIL

Plumbing, heating and bathrooms  
Installation of boilers, cookers and gas fires  
In homes, park homes and caravans  
Boiler servicing and landlords' certificates

**GAS                      LPG                      OIL**  
Gas Safe and OFTEC registered  
**07971 624804                      01584 890946**  
[johnvail123@btinternet.com](mailto:johnvail123@btinternet.com)



## The December and January Social Calendar

It's a very cheerful sign to have a Social Calendar once more that can almost fill a whole page. But do please bear in mind that any event is subject to government regulation in the current coronavirus situation.

Let's start with the December listings:

Thurs 3 <sup>rd</sup>		GREEN GARDEN WASTE REFUSE BINS EMPTIED		
	3.00-4.00	Wi Children's Clothing Co-Op, Market Hall. PAGE 21		
	12.00 noon	Short service of blessing of the Divinity Scene at the Parish Church		
Wed 9 <sup>th</sup>	10.00-11.30	CoCo Coffee Morning at the KA, Church Street. PAGE 29		
Thurs 10 <sup>th</sup>		BLACK REFUSE WHEELIE BINS AND RECYCLE BOXES EMPTIED		
	12.30	Advent Soup Lunch at the KA, Church Street		
	3.00-4.00	Children's Clothing Co-Op, Market Hall		
Fri 11 <sup>th</sup>	9.30-11.30	Children's Clothing Co-Op, Market Hall		
Sat 12 <sup>th</sup>	9.00-12.00	Collect acorns for planting from the Market Hall. PAGE 17		
Mon 14 <sup>th</sup>	6.30	The Creative Writers' Group meet in the Library	Jim Reynolds	CM 270642
Thurs 17 <sup>th</sup>		GREEN GARDEN WASTE WHEELIE BINS EMPTIED		
	12.30	Advent Soup Lunch at the KA £5.00 a head		
	3.00-4.00	Children's Clothing Co-Op, Market Hall		
Wed 23 <sup>rd</sup>	10.00-11.30	CoCo Coffee Morning at the KA, Church Street		
Thurs 24 <sup>th</sup>		BLACK REFUSE WHEELIE BINS AND RECYCLE BOXES EMPTIED TODAY		
	12.30	Advent Soup Lunch at the KA. Just a fiver!		
Tues 29 <sup>th</sup>	7.30	The Half Dead Poets' Society gather at the Library		
Thurs 31 <sup>st</sup>		GREEN GARDEN WASTE WHEELIE BINS EMPTIED		
		And the January 2021 one.....		
Thurs 7 <sup>th</sup>		BLACK WHEELIE BINS AND RECYCLE BOXES EMPTIED		
	3.00-4.00	Children's Clothing Co-Op, Market Hall		
Fri 8 <sup>th</sup>	9.30-11.30	Children's Clothing Co-Op, Market Hall		
Wed 13 <sup>th</sup>	10.00-11.30	CoCo Coffee Moring at the KA, Church Street		
Thurs 14 <sup>th</sup>		GREEN GARDEN WASTE WHEELIE BINS EMPTIED		
	3.00-4.00	Children's Clothing Co-Op, Market Hall		
Fri 15 <sup>th</sup>	9.30-11.30	Children's Clothing Co-Op, Market Hall		
Thurs 21 <sup>st</sup>		BLACK REFUSE WHEELIE BINS AND RECYCLE BOXES EMPTIED		
	3.00-4.00	Children's Clothing Co-Op, Market Hall		
Fri 22 <sup>nd</sup>	9.30-11.30	Children's Clothing Co-Op, Market Hall		
Mon 25 <sup>th</sup>	7.30	The Half Dead Poets' Society meet at the Library		
Wed 27 <sup>th</sup>	10.00-11.30	CoCo Coffee Morning at the KA, Church Street		
Thurs 28 <sup>th</sup>		GREEN GARDEN WASTE WHEELIE BINS EMPTIED		
	3.00-4.00	Children's Clothing Co-Op, Market Hall		
Fri 29 <sup>th</sup>	9.30-11.30	Children's Clothing Co-Op, Market Hall		
		And looking ahead to February.....		
Thurs 4 <sup>th</sup>		BLACK REFUSE WHEELIE BINS AND RECYCLE BOXES EMPTIED TODAY		

**The Art For All exhibition that opened on October 31st ran for just five days before lockdown closed the doors on all the efforts of a long list of local artists. For these people, who rely upon such shows to help make a living, it was a sad blow. But they are planning to open in early December - if government regulation permits - and run through to near Christmas. Tel: 07974 652 866.**



**Wild Meadow**  
**Boarding Kennels**

*Give your dog a holiday.*

**Opening hours:**  
8.30am-11am  
& 4pm-6pm  
Closed to drop offs & collections on Sunday mornings

Hopton Bank, Cleobury Mortimer, DY14 0QF

call:01584 890327or mobile: 07989 741258  
email: wild.meadow.kennels@gmail.com



**HOPTON WAFERS**  
VILLAGE HALL

**Parties, Receptions, Classes, Wakes,  
Meetings, Conferences and Exhibitions**

**Competitive rates -  
why not get a quote?**

**Safe children's outside  
play area, conservatory,  
large tarmacadam car park**

*Special offers for regular bookings  
Children's party packages*



For bookings or enquiries:

☎ 01299 270047

✉ info@hwwh.uk

🌐 www.hoptonwafersvillagehall.uk

**BOOK YOUR  
MOT WITH US**



**LEWIS  
MOTORS  
KINLET**

☎ 01299 841 391



**SERVICING & REPAIRS TO ALL MAKES & MODELS**

- Clutches & Cambelts
- Exhausters, Batteries & Tyres
- Wheel Alignment
- Diagnostics
- Recovery
- Welding

Follow us on Facebook: [LewisMotorsKinlet](https://www.facebook.com/LewisMotorsKinlet)

## Stewart Mumford Architectural Services Bespoke Architecture

Great value personal service backed up with extensive local knowledge, established links with other construction professionals to ensure comprehensive packages specifically tailored to individual needs.

Initial consultation free of charge.

Specialist in Works to Listed Buildings, Affordable Houses, Open Market Houses, House Extension and Alteration, Barn Conversion and Commercial Projects.



T: 01299 271068  
M: 07977 921039  
E: [office@stewartmumford.co.uk](mailto:office@stewartmumford.co.uk)

## Posh Potties Luxury Designer Toilet Hire

A Family run business who specialise in the hire of :

Luxury Mobile Toilet Trailers and Refrigerated Units for outdoor events.

We have all types of Portable Toilets available to hire – from Plastic Portalooos to Large Luxury Toilet Trailers.

We can also provide Refrigerated Trailer Hire

Please visit our website or contact Emma or Chris on 01746 718518 / 07929 314020 for more information.

[www.poshpotties.co.uk](http://www.poshpotties.co.uk) Oretton, Cleobury Mortimer [emma@poshpotties.co.uk](mailto:emma@poshpotties.co.uk)



When the folk were working on the mountain they stopped for a break to have a bite to eat. I remember the dogs sitting near their masters and waiting for a crust or two to be thrown their way. The staple diet of the farm dogs as I remember was a sort of flaked maize (looked like cornflakes) and boiling water was poured over it in a bucket and then fed to the dogs later on. It made a lovely smell when 'cooking'

Another pleasant smell came from the granary, where all the corn was stored in big wooden bins. You climbed stone steps to get up there and I presume in the 'olden days' the corn - mainly oats - would have been carried up there in hessian sacks. I remember an old farm worker in Scotland saying he used to carry one hundredweight sacks on his shoulders, it might have even been two hundredweight. He ended up with a very bad back in his old age. In the granary were some huge weights and a wooden weighing balance. It was tradition for us children to get weighed on it every year to see how we were gaining weight and just to have a bit of fun. I presume the corn was ground up in the barn below for animal feed.

Going down more steps in the house you came to a very damp, dark cellar. There were large slate shelves to store things on - milk, cream, home-made butter, meat etc. This would have been essential before electricity arrived. I think back to the days there of my grandparents, when my father and six uncles and aunts were growing up. Life must have been hard, but I believe they had 'staff' in those days, I know they had a live-in maid and 'servants'. One thing I remember about the cellar was seeing a big, fat toad there!

I have come across some very old photos of scenes in the cornfield at Talybont. There are three heavy horses pulling a binder (the

machine that cut the corn into sheaves), a man leading the horse at the front and another sitting on the binder, another man and a blue merle dog nearby. The men are all so well dressed, waistcoats, jodhpurs, leggings, caps on their heads, ties. I can see the watch chain on one of the waistcoats. I have owned a blue merle breed of dog all my life, so have continued that tradition. There is another photo of the 'Old House' that I have mentioned, with a heavy horse standing at the stable door beside it.

Just the basic, essential farm work was done on a Sunday. Quite a lot of the locals went to chapel, perhaps morning and evening. Uncle and Auntie Susie were faithful members of the local chapel until their deaths. There was a rota to give the Minister his Sunday dinner in between services, another rota to provide flowers for the service. My father said when he was young they had Sunday school in the afternoon, even for adults. Then the ladies provided tea and cakes on the premises and everyone stayed for the evening service. The Welsh singing was tremendous. Going to concerts and Eistedfodds was always a 'must' if possible.

Sadly now the farm buildings are no more, they were all knocked down or converted into houses. When Uncle retired the landlord took over and this was the result. In my eyes he ruined a special, historic place, but I suppose that is happening all over the country. At least I have lots of photographs and happy memories and I have enjoyed sharing my memories with you.

*Marian Rees*



# EVERYTHING INTERIOR UPHOLSTERY

## REUPHOLSTERY SERVICES:

- AUTOMOTIVE
- CARAVANS
- CAMPER VANS
- TRADITIONAL & MODERN
- COMMERCIAL & BESPOKE
- DOMESTIC
- CARPET & UPHOLSTERY CLEANING  
*(in partnership with WE GLEAM)*

**OVER 30 YEARS EXPERIENCE**



## CONTACT US TODAY

Unit 19 Old Station Business Park, Cleobury Mortimer, DY14 8SY  
07961 712683 / 07961 792103  
[www.everythinginterior.co.uk](http://www.everythinginterior.co.uk)  
email: [everythinginterior@outlook.com](mailto:everythinginterior@outlook.com)

## THE CLEOBURY CHRONICLES

The last volume of the highly regarded Cleobury Chronicles was published in 2016. The History Society is very pleased to announce that volume 13 is now available and – to make up for the delay – it contains 150 pages of articles, thirty percent more than in volume 12.

The articles cover: the importance of local history; local residents Norman Hickin and Will Link; the war of words waged by Thomas Pope, a nineteenth century rural surgeon; the refugees in Charlton House, Cleobury Mortimer in 1939; the supply of lime to Tickenhill Palace, Bewdley, in 1526; the workhouse at Cleobury Mortimer; the celebrations at the end of the Great War; the 1939 identity card and the 1939 Register; and letters written by early nineteenth century paupers.

Copies cost £6.00 plus postage and can be purchased by [visiting www.cleoburymortimerhistory.co.uk/cc13/](http://www.cleoburymortimerhistory.co.uk/cc13/).

Robert Hodge

## NOVEMBER REMEMBRANCE

This year much of the town's normal Remembrance activity had to be cancelled. However, the Act of Remembrance could go ahead as usual.

Myfanwy Baldwin had installed a poppy-covered surround to the church porch gates and a sheet of knitted poppies covering the roadside railings of the War Memorial Garden and the wall below. Thus there was a setting for Sunday's Act of Remembrance.

The Act of Remembrance was led by Rector Ashley Buck. The Last Post and Reveille were sounded by David Taylor, and George Print carried the Royal British Legion standard. Legion Branch Chairman Mike Hermolle delivered the exhortation, with Jim Hulme declaiming the Kohima Epitaph.

The first wreath laid on Sunday was placed by Anna Turner, the Lord Lieutenant of Shropshire. Further wreaths were laid by local organisations, but only about half the normal number.

Some sixty people, including a good number of Legion members, stood respectfully (and well-distanced) on the ground to the north of the War Memorial Garden, and there were more watching from the other side of the street. Although there was intermittent traffic noise, as the road couldn't be closed, there was a feeling of solemnity, and it was clear testimony to the town's dedication and community spirit.

A similar, but shorter, ceremony took place at 11.00 am on November 11th to mark the Armistice itself, but this time Katie Griffiths was our bugler. About 40 to 50 people attended.



*The November 11th ceremony.*

## Are you buying your first home, moving home or looking to remortgage?

- I personally manage the entire process ensuring you get the perfect mortgage
  - I compare, advise and arrange mortgages from the entire market
- I liaise with lenders, solicitors and estate agents to ensure a smooth process
  - **100% free** - I never charge a fee for my mortgage services
    - Access to highly competitive **life insurance** policies
- I am also a qualified **Will Writer** so contact me to have your Will written

**Call me now to find out what you can borrow and your next steps**

YOUR HOME MAY BE REPOSSESSED IF YOU DO NOT KEEP UP REPAYMENTS ON YOUR MORTGAGE



**I'm Stephanie**

**01299  
549 820**

01299 549 820 | [Stephanie@midasfp.com](mailto:Stephanie@midasfp.com) | [www.midasfp.co.uk](http://www.midasfp.co.uk)  
Midas Financial Planning Services Ltd is authorised and Regulated by the Financial Conduct Authority



## Professional Family Estate Planners



- Wills or Lasting Powers of Attorney from £95
- Free Will reviews
- Probate support
- Care home fee avoidance
- Free funeral plan with every Will
- Family Protection Trusts

"A lifetime's attention to complex legal issues as a retired Detective Superintendent and now a Private Client Lawyer means **you can definitely trust Mark and his daughter Lauren** to write your Will"

**T:** 01299 251442  
**E:** [info@ambalegalservices.co.uk](mailto:info@ambalegalservices.co.uk)  
**W:** [ambalegalservices.co.uk](http://ambalegalservices.co.uk)



- Appointments by telephone, video link or in the comfort of your own home
- Over 45 years' experience in law
- Friendly and professional support for you and your family
- Call us up to see how we can help!



### THE LARCH BARN

*cafe & plant centre*

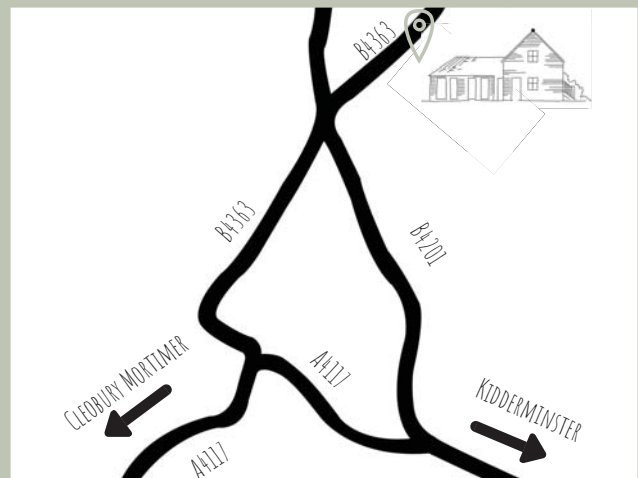


Cleobury Mortimer

OPEN 9:30AM - 4:30PM, 7 DAYS A WEEK!

[WWW.THELARCHBARN.CO.UK](http://WWW.THELARCHBARN.CO.UK)  
[HELLO@THELARCHBARN.CO.UK](mailto:HELLO@THELARCHBARN.CO.UK)

ENJOY OUR DELICIOUS HOMEMADE CAKE AND AFTERNOON TEA WHILST RELAXING IN OUR OUTDOOR AREA WITH OUTSTANDING VIEWS OF THE CLEE HILLS AND CHILDREN'S PLAY AREA!



SIX ASHES NURSERY, BRIDGNORTH ROAD, CLEOBURY MORTIMER, DY14 8JF



## Cleobury Mortimer Benefice Services, Events and Activities throughout the Benefice December 2020

### St Mary the Virgin Parish Church, Cleobury Mortimer.

#### Services

Sunday 6th December

10am Eucharist

Sunday 13th December

10am Eucharist

Sunday 20th December

10am Eucharist

Thursday 24th December

23.30pm Midnight Mass

Friday 25th December

10.00am Christmas Day Eucharist

Sunday 27th December

10am Eucharist

### St John the Baptist Parish Church, Kinlet.

Sunday 6th December 11.00am BCP Eucharist

Sunday 20th December 11.00am Morning Prayer BCP

Thursday 24th December Christmas Eve Midnight Mass 23.30pm

### Saint John the Baptist Parish Church, Doddington.

Sunday 13th December 11.15am Eucharist

Thursday 24th December Christmas Eve 15.00pm Christmas celebration

### All Saints Parish Church, Neen Sollars.

Sunday 13th December 11.00am Eucharist

### St George's Parish Church, Milson.

Sunday 6th December 11.00am Eucharist

Friday 25th December Christmas Day 10.00 Eucharist

### St Mary's Parish Church, Neen Savage.

Sunday 6th December 18.30pm Evening Prayer BCP

Friday 25th December Christmas Day 10.00 Eucharist

### St Michael and All Angels Parish Church, Hopton Wafers.

Sunday 13th December 9.30am Eucharist

Thursday 24th December Christmas Eve 21.30 Mass

Friday 25th December Christmas Day 10.00am Eucharist

The Church Office is open Tuesday and Thursday  
from 9.00am-15.00pm

Contact details: Grace Johnson  
cleoburychurch@hotmail.com

Tel: 01299 272916

# HIGHLEY FAMILY FUNERAL SERVICE

(Part of Cleobury Funeral Directors)

*'I consider it a privilege to be there for you and to be by your side. Being able to hold your hand, and show you kindness when you need the support is what it is about'*

ADRIAN SATTERLY (FUNERAL DIRECTOR)

Serving Highley, Kinlet, Bridgnorth, Chelmarsh, Chorley & all surrounding areas

**1, Garden Village, Highley, Shropshire. WV16 6HN**

**Telephone: 01746 866577 or 01746 866576 (24 Hour Service)**

## Paul Harding



## Tree Services

- Tree surgery and felling
  - Woodland thinning & maintenance
  - Hedge trimming & grass cutting
  - Supplier of hardwood logs, kindling and garden bark
  - NPTC certified fully insured. Domestic and commercial work undertaken.
- Tel 01584 890 993 Mob 07970 878 224**



**Cleobury Chiropody**  
Janet Manley

Qualified Chiropodist  
MSSCh. MBChA  
BSYA (reflex) REIKI Master

Tele:- 01299-272841  
Mob:- 07805-268439

Email: janetpmanley@yahoo.co.uk

2, Tenbury Road,  
Cleobury Mortimer,  
Kidderminster,  
Worcs.  
DY14 8RB

**KIDDERMINSTER CARPETS LTD**  
(FORMERLY KIDDERMINSTER CARPET SPECIALISTS)

FAMILY BUSINESS, OVER 35 YEARS' EXPERIENCE  
DOMESTIC & COMMERCIAL

COMPETITIVELY PRICED, QUALITY PRODUCTS:  
CARPETS, SAFETY FLOORING, VINYL, LAMINATE,  
WOOD FLOORING, KARNDÉAN AND AMTICO

SAMPLES BROUGHT TO YOU AT YOUR HOME OR  
BUSINESS AND FREE QUOTATIONS OFFERED

OFFICE: 01299 251 527 MOBILE: 07836 385 022  
www.kidderminster-carpets.co.uk

***Offering a friendly, flexible and professional service to make your everyday life easier.***

- Dog walking at our farmhouse or locally to you
- Pet sitting
- Half day doggy day care
- Overnight home from home for pets
- Home admin
- Light gardening
- Running errands
- Home checks



**Everyday Poppins**  
Giving you a helping hand

Contact us to find out more  
amber@everydaypoppins.co.uk www.everydaypoppins.co.uk Call Amber on: 07730 574 368

*We are based near Hopton Wafers. DBS checked. Find us on Facebook*

## Dear Santa, Simon Morton's been in the garden again....

I'm an avid reader of gardening magazines. My desk is festooned with yellowing copies from years gone by, page corners folded over or with 'Post It' notes calling out pages of particular interest. It might be a specific plant, a colour scheme or an entire garden plan - it doesn't matter. They all find their way onto increasingly teetering piles, fighting for valuable elbow room.

Around this time of year, magazines fill countless pages with the same topic - 'Christmas gifts for gardeners'. I once worked, mercifully briefly, with a PR company and got to see the internal workings of such a business - it seemed to centre around nagging/cajoling/nudging-to-the-point-of-bribery magazines to feature their products. The smallest of inclusions in such a seasonal article would generate huge excitement, back-slapping and hefty invoice raising in their fancy London offices. I'd seen behind the curtain and it was a huge disappointment - it would seem that these articles are merely a vehicle for the PR industry to sell their wares. Bah humbug.

Despite this, I still can't stop myself poring over the pages, in much the same way I used to devour the Christmas edition of the Argos catalogue. The selection is always reliably familiar - there are the vastly overpriced antique cloches (presumably to protect your antique veg), artisan garden clothes (for that 'Land Girls' look that is so on-trend when you're on your knees swearing silently at bindweed) and exorbitantly priced benches that cost more than a sofa. Quite who buys these things is beyond me...but no doubt their inclusion in the magazine contributed to the year-end bonus enjoyed by the PR account director.

I realise I'm sounding horribly cynical and that couldn't be further from the truth. It's just that, as a gardener, I've been on the receiving end of the kind of gifts that appear in these

articles and I can tell you, it's very rare that a man gets excited by unwrapping a ball of twine or a wooden instrument to make your own newspaper plant pots (no, really). We gardeners are simple folks - we like books, magazine subscriptions (see above) and compost.

The books and magazine subscriptions are pretty self-explanatory. If we're not on our knees weeding, kick-starting/swearing at the lawnmower or deadheading, we like to dream. We dream of our own gardens magically becoming the oasis of calm that adorn the pages of the glossy magazines and coffee table books. *The lilting flight of a butterfly perfectly capturing the soft sunshine as it makes its way through a perfectly pruned perennial...that sort of thing.* These publications keep our dreams alive during the cold months and keep us on the straight and narrow during Spring and Summer. They are the gifts that keep on giving.

Granted, the idea of gift wrapping a bale of compost and placing it under the Christmas tree may not sit well with many readers. Indeed, chances are that the lucky recipient of 50 litres of peat-free compost may also be a little perturbed. But consider the promise that sack of non-recyclable plastic holds - the pots of tulip bulbs planted in Winter, the annual flowers sown in Spring and the simple joy of digging out new potatoes from a sack as Summer fades. The hidden potential of a bag of compost is proof positive that much of gardening is about planning ahead, dreaming big and revelling in the anticipation of warmer times to come.

Whatever you end up doing, in or out of the garden this Christmas, enjoy, stay safe and look after each other.

*Simon*

FOLLOW US ON FACEBOOK TO STAY UP TO DATE EVENTS



NEW TAPAS MENU EVEN MORE OPTIONS TO CHOOSE FROM.  
ITALIAN STONE BAKED PIZZA IN HOUSE OR TAKEAWAY.  
01299 27270 [the.royal.fountain.inn@gmail.com](mailto:the.royal.fountain.inn@gmail.com)



## TURNERS GATES

bespoke sizes at standard prices



A small family run business specialising in quality wooden gates to suit all entrances.

Visit our website: [www.turnersgates.co.uk](http://www.turnersgates.co.uk)

Drop us an email: [turnersgates@outlook.com](mailto:turnersgates@outlook.com)

Or give us a call on: 01299 270 965







## Winter in the Wyre Forest

Linda Iles

When we moved to Uncllys Farm 16 years ago we knew we were extremely fortunate, and every day reminds us of that. One result of the move was that we exchanged an urban existence in Bewdley to a rural one: we still have our friends and contacts in the town but our day to day interactions reflect the new location and land-based way of life.

Early on we were introduced as the new tenants of Uncllys to the Ruskin Land neighbours. These were the people whom we would rely on for helping us retrieve lost livestock and with whom we would appreciate our interdependence in times of heavy snow. In 'the old days' the post lady enlisted John's help to collect the post from her at the end of the lane so that it could be delivered by tractor.



*Winter brings gentle quietness, especially when snow covers the ground.*

Next came the service providers and delivery drivers. The man from BT Openreach was about the only one who said he would hate to live "all the way out here" - most share our view that we are very lucky, even if some have had to struggle with being misdirected by their Satnavs! A local firewood

supplier started us off with our plan to use short-term cycle carbon while the local gas cylinder sellers helped us out when we realised that we 'could not live by wood alone'! (That first winter was jolly cold.) We got to know suppliers of animal feed, fencing wire, timber and stone and couldn't have managed without the friendly advice of graziers who brought their sheep or sold us the Dexter cattle to start our herd.

And then there were the volunteers. We had both worked for the Conservation Volunteers and firmly believed in the value of involving people whose idea of fun is working on some agricultural or conservation task in the open air. At first there were friends, colleagues and folk with some time on their hands who helped with planting trees in the orchards, putting in gate posts etc. A church in Wolverhampton made many visits and were responsible, among other contributions, for building a small bridge (the 'blokes') and helping to make the pond (everyone, from children to grannies). When the Wyre Community Land Trust was formed it became the home of a volunteer group which has been indispensable in managing the meadows and orchards scattered round the forest and who have become firm friends over the years.

Even now we're confined to our home turf I look forward to meeting walkers out on the forest paths, many of them equipped with binoculars and cameras and full of information about the wildlife that lives all about us.

A quieter life it may be but we cannot manage without all these people and I would like to say "Thank you" for what they've added to our lives as we come to the end of this very strange year.

Linda Iles

## More Clarion Smalls

### GUTTER CLEANING SERVICE

No ladders or scaffolding needed.  
Can reach any awkward place.

All residential and commercial

Competitive rates

Call Ian on 07870384096

### PAUL LYNCH PLASTERING SERVICES

Recently relocated. Offering all aspects of plastering including making and repairing mouldings, cornices, etc. Fully insured, references available.

**07890 049 592**

or

**01299 272931**

## HIS & HERS

### Dog Grooming Parlour

All breeds and  
Cross breeds professionally  
Trimmed and Groomed



**J. A. Guest**

**Tel: 07790 796 027**

### Washing Machine Repairs and Sales

**JULIAN BREAKWELL**

**Telephone 07791 633 746**

**Repairs to all makes, including  
Bosch, Hoover, Zanussi and  
Hotpoint**

**NO CALL OUT CHARGE  
FIXED LABOUR COST**

## Ever After

- Breakfast club
- After school club
- Holiday club
- "Forest schools" outings
- 15hrs education funding
- 24U funding
- Age ranges: 3 months to 11 years



**Day Nursery**  
Cleobury Mortimer

Please contact us on 01299 272 777  
Or Call in to see us anytime.

Friendly, Caring Environment for the Community

A big thank you to everyone, including the Severn Hospice shop, and the Market Hall, who have contributed towards our plea for soft toys, bed clothes and childrens clothes. You have done us proud: 10 bags of soft toys to the Teddy Trust, bed clothes and children's clothes to a local women's refuge. Many thanks and stay safe,

We now have A web site

[collections4charities.com](http://collections4charities.com).

Many thanks and stay safe, 07976307889,  
[balmeruk@gmail.com](mailto:balmeruk@gmail.com)

### Piano tutor

**Francis Engleheart**

School-aged or adult students, beginner or advanced. Based in Kinlet, but I can come to you. Some day and after-school spaces available.

07710 288526 • [fengleheart@hotmail.com](mailto:fengleheart@hotmail.com)

**S. L. CARTER**

**PROFESSIONAL PAINTER AND  
DECORATOR**

**PLASTERING, TILING, COVING AND  
GLAZING**

**CLEOBURY MORTIMER**

**TEL: 01299 272868**

**MOBILE: 07815 483 029**

As this should appear in the December/January 'Clarion' can I wish everyone the best and happiest Christmas it will be possible to have under the circumstances. Back to usual grumpiness in 2021. Although festivities may well end up being cancelled this year should any partying take place, you girls (and boys!) bear in mind the wise words of the writer and poet Dorothy Parker.

I like to have a Martini  
Two at the very most  
After three I'm under the table  
After four I'm under the host

You have been warned...

Someone the other day was saying that should Boris depart at any point, he didn't see any Prime Ministerial material within the Cabinet. I must say that looking around, I don't even see any Cabinet material within the Cabinet. Luckily, the *de facto* Prime Minister, Cummings D has departed in a huff being replaced by Symonds C although Johnson B retains his post as Deputy PM. 'Rejoice!' as Maggie Thatcher once said because with a woman in charge we might see some sensible policies and decision making and less willy waving. It is noticeable that countries with a female leader such as Germany and New Zealand have outperformed the majority of male led states and, lets face it, things can't get much worse here.

When the famous suffragette Sylvia Pankhurst was imprisoned for her activities, she managed to smuggle out political messages, poems and even a five act play (!). Of necessity, these were written on toilet paper and when, many years later, they were offered to the British Library, they were turned down and only accepted some time later. Perhaps the curators were worried that they might rub people up the wrong way...

We are still banging on about the evils of slavery with many organisations searching out possible connections, however tenuous, to beat themselves with. The National Trust is one that has upset many of its members by spending much time and effort searching out such links when it has more pressing problems such as its future to consider. Whilst there is no doubt that slavery was evil, isn't it about time that the other players, such as the neighbouring tribes in West Africa and Arab slave traders, who supplied the victims in question, were looked at? And whilst we are about it, should we not be seeking apologies from Algeria, Libya and Morocco for the abduction of tens of thousands of people from the West Country who were kidnapped from their homes during the 17<sup>th</sup> and 18<sup>th</sup> Centuries by the Barbary Pirates and sold in the slave markets of North Africa, most never to be seen again. Then there are the French who should definitely apologise for the genocide inflicted on northern England after 1066 and we mustn't forget the Italians who should atone for their slaughter of the Iceni (and other tribes) after AD 43. Of course this is all getting silly, but these things happened, they were bad and should be regretted and recorded to ensure a balance between the good and bad done by those involved. However, now we need to get over it and move on to confront the many serious problems that the planet now faces.

These vegans get everywhere... A vegan appointee to the House of Lords will be taking her seat supported by two existing members who are also from the Dark Side. As a result, they will all be wearing fake fur trimmings on their robes. This is traditionally Ermine which comes from stoats which you can tell apart from weasels because the weasel is weasily identified while a stoat is stoatally different. Sorry...

*Ariadne J Grumpy*

# NEWSPAPER DELIVERIES



Monday- Saturday

Covers Cleobury Mortimer and Clee Hill

Contact Laura Callwood on 07495 708404

or [lauracallwood@outlook.com](mailto:lauracallwood@outlook.com)

# WILMAS CLEANING & IRONING SERVICES

Experienced cleaner, very trustworthy and reliable. If you would like your ironing done you can drop to my house. I am available weekdays, and weekend's times/days flexible. References are available upon request.



Please contact me for further details on

**07891416477**  
**01299 272 941**



Number Nineteen

# No.19 Denture Repairs

Dental Laboratory

## SPEEDY, QUALITY DENTURE REPAIRS

Cracked/broken dentures repaired the same day.

A 1 HOUR service is available for when time is of the essence, just call to make an appointment .

19 Lower Street, Cleobury Mortimer, DY14 8AL

Email: [nevilleweaver@googlemail.com](mailto:nevilleweaver@googlemail.com)

Phone: 07973856733

All work undertaken by a GDC registered technician

# No.19 The Beauty Room

with Jane Weaver



Wash away the aches, pains and stress of everyday life by indulging in a relaxing Swedish massage, any combination of back, shoulder, neck, arms and legs, ½, ¾, 1 or 1½ hrs, or treat yourself to a manicure/pedicure, waxing or tinting.

Telephone consultations available to discuss any personal requirements, treatments available at No.19 or in your own home. Contact Jane on 07968 882269 or email [19thebeautyroom@gmail.com](mailto:19thebeautyroom@gmail.com)

*Just like the lotus flower we too have the ability to rise from the mud, bloom out of*

*the darkness and radiate into the world!*



## TOTAL PROPERTY MAINTENANCE

Fireplaces built for multi-fuel burning stoves,  
Plastering, Building & General Maintenance

**Rob Taylor**

Mobile: 07944 074540

Landline: 01299 832734

Email: [rptbuilding@hotmail.co.uk](mailto:rptbuilding@hotmail.co.uk)

## E.PURSLOW & SON LTD

Stone, Gravel, Cement Supplies

Approved Coal Merchant

Calor Gas Stockists

Tarmacadam Specialists

Car Parks and Driveways

Constructed.

**TEL: 01299 270314**

# David Ward firewood



Do you need a dependable consistent quality supply of seasoned or kiln dried hardwood and softwood firewood?

Cut and split to suit and delivered in breathable 1.2-cubic metre bags, so no need to restack.

Small delivery vehicle, fitted with crane, can deliver to most locations and situations.

CALL DAVID TO DISCUSS YOUR REQUIREMENTS:

Mobile: 07866 441154

# Alan Smith Aerials

*Digital TV Installations.*

**Freeview** aerials fitted and distributed around the house.

**Freesat** box, dish, and cable supplied and fitted. One off payment, **No contract or subscription required.**

Extra points, Repairs, New fits, Set ups, Multi room.

All work is carried out by a **Local**, fully qualified and insured installer.

**01299 270007 or 07970 675728**

## The Men's Shed



The progress made by the Men's Shed has been amazing. All thanks to a hard working committee and many generous donations and grants, which include:

Compassionate Communities: Inspiration for a Men's shed and financial support including meeting room hire.

Hobsons Brewery: Free use of Brewery Tap for meetings and free refreshments!

New House Farm Industrial Estate: Shed site provided on peppercorn lease of £1 per year

Mr K.L Blackburn (Retired Architect): Free Architectural drawings for full planning permission.

Mr Justin Parker (Solicitor) ; Free legal work for the site lease

Hilton Smith Specialist Foundations: All foundations materials and full foundation installation free of charge

David Chance - Bayton Building Co Ltd: Foundation level marking out and floor surface buffering free, and shed at significant discount.

Huws Gray Building Supplies: Maximum trade discount given for materials

Cleobury Clarion: Paid for website set costs  
Andy Perkins, Energy Zone: Free advice on energy issues

A.Wakeman Electrical Services Ltd; Free electrical installation

Dan Morgan Vortex Plumbing & Heating; Free plumbing installation

John Renfrew Right Way up Ltd: Logo design at 10% of commercial fee

John Brazier Accounting: Free accountancy advice

Simon Hector Fairway Accountants: Free auditing of annual accounts

Cleobury Women's Institute: £300 raised  
Severn Hospice lunches: £138.50

Glen Caravan park: £100 and steps donated

Cleobury Mortimer Fire Station: £62.67 raised

**Successful Grants many of which thanks to Keith Martin (R.I.P) and Bill Duley:**

Assura PLC: £4000

Radnor Health: £395

Hobson Charity [\*London Trust]: £2000

Truemark Trust: £4000

National Lottery Awards for All: £10,000

Cleobury Town Council grant: £1000

Roger & Douglas Trust grant: £1000

Ludlow Rotary Club: £500

Grants and support gratefully received from Stotteston , Kinlet, Hopton Wafers, Farlow and Orton and Need Savage Parish Councils

The generous donations continue to flow in from the community including the collection boxes and at every twist and turn of our journey we experience amazing community support. We should be able to make further positive funding announcements soon and aim to get the shed open for the spring of 2021.

*Pete Blackburn, Committee Chair*

### The Divinity Profile work party



*Drafting and grafting at an early stage in Pete Blackburn's garage. From left: Iain Smith, Guy James, Pete Blackburn, Peter Cuthbert.*

# Hands on Printing

Print your own photographs on our SNAP LAB PRINTER  
or we can do it for you.

All Digital formats disc- cards or phones

Print sizes 6 x 4 5 x 7 8 x 6

Enlargements from 10 x 8 to 36 x 24 inches

Canvas prints from 16x12 to 20 x 30 inches

Prints from 35mm slides - Celebration Banners - Paper or Plastic

Most video tapes transferred to D.V.D.

Audio tapes and records to C.D.

Cine films to D.V.D.

Pass ports - Bus pass - Driving licence photos etc.

Colour Business Cards - Flyers - Raffle Tickets B-W or Colour copying

A selection of Photo Frames now available

43, High street, Cleobury Mortimer. DY14 8DQ Tele:- 01299-272757



LACON CHILDE SCHOOL

the future begins here

Headteacher: Darren Reynolds



Lacon Childe School, Love Lane, Cleobury Mortimer, DY14 8PE

Tel. 01299 270312

email - admin@lacon-childe.org.uk

**LUDLOW  
SALVAGE**  
~ Est 2017 ~

Reclaimed Building Materials  
and Architectural Antiques

Station yard, Station road,  
Woofferton, Ludlow SY8 4AW

**T** 07805 312168

**@** ludlowsalvage@gmail.com

**f** /ludlowsalvage

**@** /ludlowsalvage

**WWW.LUDLOWSALVAGE.CO.UK**

# Boomerang

of Cleobury Mortimer

# G

private hire travel

- Friendly, reliable service
- Local & long distances
- Fully council licensed (up to 12 passengers)
- Airport transfers
- Courier service
- All occasions catered for

Tel: 01299 271257, Mob: 07411 142755, Email: stuart.boomerang@yahoo.co.uk



# Homeland Park, Chorley

Residential Country homes for the over 50's

- ◆ 12 month license
- ◆ One pet welcome per home
- ◆ Members of British Home Parks Association

Come and view the new Show Homes and other available plots at the village location of Chorley, Nr. Bridgnorth



Homelands Park, High Green, Chorley, Nr Bridgnorth, Shropshire WV16 6GB

[www.homelandschorley.co.uk](http://www.homelandschorley.co.uk)

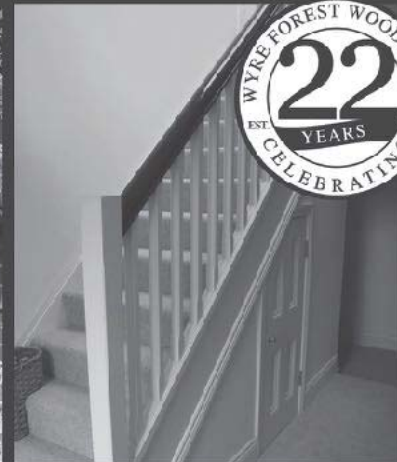
Phone: 01746 718145 Mob: 07980 828311 & 07342 654250



**WYRE FOREST  
WOODCRAFT**  
purpose made joinery

Specialists in the Manufacture  
of Purpose Made Joinery

- Tailor Made Timber Windows
- Traditional and Contemporary Style Timber Doors
- Custom Made Staircases
- Bespoke Conservatories
- Made to Measure Gates



TO SEE EXAMPLES OF OUR FULLY FACTORY FINISHED JOINERY VISIT OUR WORKSHOPS AND SHOWROOM

[www.wyreforestwoodcraft.co.uk](http://www.wyreforestwoodcraft.co.uk)

01562 68100 | [enquiry@wyreforestwoodcraft.co.uk](mailto:enquiry@wyreforestwoodcraft.co.uk)

Oldington Lane | Firs Ind Est | Kidderminster | Worcestershire | DY11 7QN

## IRENA

S.A.C DIP. (DIST). N.C.F.E. M.C.F.H.P.  
FOOT HEALTH CARE PRACTITIONER



All your foot problems dealt with:-

- Foot health check
- Verrucas etc.
- Corns
- Medical Manicure
- Callus
- Medical Pedicure

Free vascular Doppler Check of your feet

The Old Farmhouse  
Button Bridge, nr Bewdley  
DY12 3AW



Mobile visits available  
01299 841 277  
[hessins@gmail.com](mailto:hessins@gmail.com)

# Cleobury Mortimer Golf Club

At Cleobury Mortimer Golf Club we believe that a really enjoyable golf day takes more than just a great golf course. We make sure that your whole experience, from the friendly welcome in the golf shop to your drinks and meal in our relaxed clubhouse, is all part of a day you'll remember.



## Everyone Welcome

Membership available.

Just some of the many benefits of joining Cleobury Mortimer Golf Club

- Access to full length 27- hole golf course
- Opportunity to achieve and maintain a handicap
- Family, Friendly Environment
- Playing opportunities at all times of the week
- A range of competitive opportunities
- Open dawn to dusk 363 days a year.

*We look forward to meeting you at Shropshire's friendliest golf club.*



01299 271 112 (ext 1)

pro@cleoburygolfclub.com

www.cleoburygolfclub.com





# EnergyZone

Integrated Renewable Solutions

## HEAT PUMPS FOR CLEOBURY MORTIMER

EnergyZone are one of Cleobury's best kept secrets. We are one of the largest and longest established renewable engineering companies in the UK installing heat pumps since 2003. 14 in house engineers with over 130 years combined experience completing over 1000 Domestic and Commercial systems all over the UK. Based next to Hobsons Brewery in Cleobury we are your local experts in heat pump systems.

Heat pumps are rapidly becoming the standard heating system for all new build properties, as they always have been in many parts of Europe, and the Government is offering a very generous incentive to encourage anybody with an Oil, LPG or Electric boiler to replace this with a heat pump.

**Replacing your boiler with a heat pump has many advantages;**

- **Lower running costs for your heating - up to 50% lower**
- **No dependence on fuel deliveries**
- **Removal of your oil tank - included in our boiler scrappage scheme**
- **7-year warranty with a 20 to 25-year life expectancy**
- **Government backed Renewable Heat Incentive (RHI) to help cover installation cost over 7-years (available until March 2021)**

**What can EnergyZone offer?**

Complete design and installation of a heat pump system, including all paperwork required to enable you to claim the maximum Government incentive

Upgrade of your old radiators and hot water cylinder if required

Local support with annual servicing through our EZcare package

With the current Government incentive now is a great time to consider scrapping your old fossil fuel boiler and installing a heat pump that is not only good for the planet but also your pocket.

**Call us for a free home assessment from one of our engineers.**



Fully accredited installers of the brands above ensuring the correct model is selected for your home

# 01299 270011

[www.energyzone.co.uk](http://www.energyzone.co.uk) [sales@energyzone.co.uk](mailto:sales@energyzone.co.uk)



# ONE STOP ROOFING

## The Flat Roof Specialists



- Rubber, Fibreglass & Felt
- Re-pointing & Chimney Repairs
- Fascias & Guttering



**Take advantage of our offer:** Replace your flat roof Making EPDM (rubber) your choice for a long lasting, weatherproof & high slip resistant membrane, with a lifespan of 50 years, **get it for the same price as felt**, which only carries a 10 year guarantee!

Replace your flat roof with EPDM (rubber) & add a skylight or lantern, giving extra light to your room starting **from as little as £400!!**

Freephone 0800 0855277 \* 07538 471274

[www.onestop-roofing.co.uk](http://www.onestop-roofing.co.uk)

[onestoproofinguk@gmail.com](mailto:onestoproofinguk@gmail.com)

Family business est. 35 years.  
All repair work undertaken

Proud members of  
**Checkatrade.com**  
Where reputation matters

## CLEOBURY SEAFOOD & FREEZER CENTRE

6 Newhouse Farm - Tenbury Road - Cleobury Mortimer

**01299 271345**

### Ready Meals

*We stock a wide range of ready meals, from the ordinary to the extra ordinary !  
Plus a range of Vegetarian, Gluten Free and Vegan meals.*

### Mr Dave's

*Meat, Chicken, Prawn and Vegetarian Balti, Madras Curry  
Mr Dave's extra large naan, plain and garlic & coriander.*

### Fish

*Cod, Haddock, Plaice fillets, Sea bass, Lemon sole, Cod Loins, Smoked Haddock.  
Battered & breaded fish fillets. Young's Jumbo Cod Fish Fingers.(Very Popular)*

### Seafood

*Raw king Prawns, Squid, , whitebait, cooked tiger prawns, scallops, seafood cocktail.  
Hot & Spicy Prawns, Breaded Cod & Plaice Goujons*

*New Fish Cakes Thai Style Cod & Prawn, Smoked Haddock, Mozzarella & Spring Onion,  
Sea Bass, Cod, Lime & Ginger.*

### Fruit and Vegetables

### Potato Products

*Bannister Jacket Potatoes, Oven chips, Sweet Potato Fries Twister Fries, Hash Browns, Spicy Wedges*

### Chicken Products

*Southern Fried Breaded Chicken Steaks, Breaded Chicken Goujons, Chicken Nuggets, Chicken Bites.*

### Gateaux for all occasions

### BENNETTS ICE CREAM

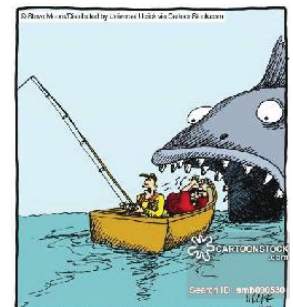
**Opening Times 9am to 4.30pm Mon to Friday. Saturday 9am to 12**

Visit our web site [www.cleoburyfreezercentre.co.uk](http://www.cleoburyfreezercentre.co.uk)

**Cleobury Clarion - Page 50 - December/January 2020/21**



"We tried artificial flies. We tried lures.  
We tried live bait. Nothing works ...  
It's like they're psychic!"



"Blood-curdling screams. Hayes, will  
do nothing to help us catch a fish."

## **CMTC December/January Clarion Report.**

I think that we will all be happy to put 2020 behind us as a very difficult year with many challenges faced due to Covid 19, but all working together have helped us deal with it the best we can, and still are. Hopefully in 2021 we can return to some normality, but a big thank you to all the volunteers and those working in the front line to help others. Your help and dedication are recognised by us all.

We still managed to get the Play Area done for use and keep the Town moving forward with projects, although we missed the annual festival this year, we are hopeful for next year.

To help with our desperate flooding issues we have the drains unblocked and cleaned throughout the town, which has not been done for well over ten years. This also raised some underground issues that will need attention.

We are incredibly happy to have put up our Christmas lights, again with help from volunteers, which has already brought smiles to peoples and especially children's faces. This we know is essential to help our community live as normal a life as possible.

If you wish to put a message or bauble on any of the trees in memory of a lost one, or even someone you cannot see at the moment, then please do.

Cleobury Mortimer has many groups, organisations and businesses that are working hard for us all to work together and we are envied by other councils that have been relayed to me from other clerks. It is all down to you.

It is so easy now to just order online, but please take a look in our local shops and see if what you want is there. Have a browse around and I know you will be surprised as to what we have locally. It also helps to support those who need us right now.

The Food Bank is open every Friday morning at the Market Hall from 9.30am to 11.30am but over Christmas and New Year will be open on Thursday 24th and Thursday 31st. We welcome anyone in need and struggling in these challenging times. So, if you are in need or you know someone who is struggling, then please help us promote the Food Bank. We would also like to say a big thank you to everyone who donates and the Volunteers who give up their time to help.

As we move into 2021, we have other projects we are looking at. Lighting around the QEII area and skate park, also some steps, ramp, and a footpath from the football field into the area. Another one is looking at how we can enhance the Wells and make the most of our precious sites of heritage. On that theme we also continue to look at the Manor House and what can be done, actively assisting in any pressure we can put on the present owner to either sell, by putting potential buyers in contact or bring back to life as the heart of our town.

Look out for an update from the Steering Group of The Neighbourhood Plan in this edition of the Clarion.

Please be aware that Rural crime is on the increase this is the time of year as we are having the seasonal break ins of garden sheds, outbuildings, and garages. Please secure as best you can and note any strange vehicles around. I know we have excellent CCTV, but we do have software updates and the odd exceedingly rare issue with a camera, so please do not rely solely on the cameras as we still need to be vigilant.

From the Town Council, stay safe all and enjoy the festivities as best you can, see you all in 2021. Keep up the good work.

Matt Sheehan  
Town Clerk



# KINLET C OF E PRIMARY SCHOOL

Love to Learn – Learn to Love



- Outdoor play areas
- Small family atmosphere
- Kind – Inspire – Nurturing – Learning – Eco-friendly -Teamwork

[www.kinlet.shropshire.sch.uk](http://www.kinlet.shropshire.sch.uk)

[admin@kinlet.shropshire.sch.uk](mailto:admin@kinlet.shropshire.sch.uk)

Telephone: 01299 841210

[www.atriumhereford.co.uk](http://www.atriumhereford.co.uk)

## ATRIUM

HARDWOOD

[sales@atriumhereford.co.uk](mailto:sales@atriumhereford.co.uk)

**Manufacturers and Installers of Bespoke Hardwood Orangeries,  
Conservatories, Windows and Doors.**



The Old Foundry, Kington, Herefordshire HR5 3DA

Tel 01544 231769

## Lower St Garage

7 Lower St, Cleobury Mortimer. DY14 8AA



- M.O.Ts on cars, motor bikes & small commercial vehicles
- Tyres, Tyre fitting,
- Puncture repair and Tracking.
- Diagnostics, Air conditioning
- Welding.
- Service and Repairs to most vehicles.
- Delivery and Collection Service Available

**Contact The Team at Lower St Garage on: 01299 270208**

Article 5 of our series on Scams follows on along the electronic scam activities and in this article, I hope to show some ways of staying safe and avoiding loss. Last month we talked about how scammers can find ways of stealing your identity to create a “clone” usually of your Bank details in the form of a new credit or debit card. They are ruthless and cunning and always hiding behind a computer either here in this country or somewhere abroad. There are some simple steps as an individual you can take to stay one step ahead and frustrate a possible attempt to violate your privacy. If you are reading this article online you are very much connected to the electronic world and using a web browser to access this article. You may be using a desktop computer or one of the many mobile devices, such as Laptop, Tablet or Smart Phone. But how often since you first bought that device have you changed the password to access it? Too much hassle you say, but inadvertently allowing someone else (a hacker) to access it creates a magnitude more hassle for you. Even if you have a desktop computer at home you should use the user password facility as a gateway to the operating system and your personal data. Almost every piece of software or as we now call them “APP’s” either uses your basic password or a specific access password for you to be able to use it. Most of these APP’s retain bits of personal info, possible name, address or data specific to the APP.


One of the most critical is of course online banking. When I first started in my career in IT, I worked on local Banking Branch terminal systems and have seen first hand the development of technology that has taken away the personal and confidential nature of our dealing with the local branch. It is arguable that access online to banking and financial transactions is a huge benefit, but it carries significant risk if the user does not employ sufficient security. This is down to password use or abuse and the basic elements that we will illustrate are valid for any Application that uses password control.

Let’s look at what I call the ‘Rule of 5’. The first and most important rule about selecting a password is this. Do not use simple words that can be found in everyday speech. E.g. Family names, pet names, place names etc.

Scammers are using computers that are powerful enough to scan millions of possible options every minute, eventually finding the word Curdale or LionLane or Mortimer. The second rule is to include numbers and special characters in your password, this makes it much more difficult to crack. E.g. Curdale could become Curdal3 or LionLane would be L10nLan3. Using a mixture of upper/lower case letters also helps greatly. E.g. #L10n@lan3@# would be a strong password which also has 12 characters. This would provide a big challenge to any hacker. However, while many applications suggest or even demand the use of a strong password, you can be limited to only 8 characters and only a handful of special characters (if at all). The third rule to follow is to not use the same password for everything. The reason is simple, if your password is cracked or identified for one application, every other use of the same password opens up your computer like a treasure chest.

The fourth rule is often quoted by companies who ask for password control, and that is to change the password frequently. Not so easy and time consuming to do, but enhances your level of protection especially if a company you have used has been hacked themselves and their customer data is compromised. The final rule of 5 is to store your passwords somewhere safely, not written down on a piece of paper in your wallet or purse! There are online a number of what are called Password Vaults. These are programs that allow you to store your passwords safely and encrypted on your computer or in the Cloud (a method of storing and retrieving data outside your computer).

If you have a smart device such as iPhone or iPad, Apple can create very strong passwords for you and store them securely in your device. In summary, we have looked at how Scammers can access your data if you do not protect it sufficiently, I urge you to review your own circumstances and follow the advice to **Stay Alert, be Aware & Stay Safe**. In the next issue we will look at some of the typical scams that are being used today and how they work. You can also find more information at the website [www.beat-the-scams.info](http://www.beat-the-scams.info) or on the several websites offering advice on beating scams.



# LUDLOW FIREWOOD

~ Est 2019 ~

Suppliers of Premium Grade Ready  
to Burn Firewood, Beautifully Crated  
and Delivered to Your Door



**T** 07805 312168 or 07974 495803

**@** ludlowfirewood@gmail.com

**Instagram** /ludlowfirewood

**Facebook** /ludlowfirewood

Station yard, Station road, Woofferton, Ludlow SY8 4AW

**WWW.LUDLOWFIREWOOD.COM**

Also available in Mini Crates and  
Barrow Bags to cover all your  
access requirements.



## *Richard Haines* The Worcestershire Chimney Sweep

- ◆ Traditional & Power Sweeping Services
- ◆ Certified Chimney Sweep
- ◆ Insurance Recognised certificate issued



M: 07752 116629 T: 01584 781358 E: lostcity5@hotmail.co.uk

[www.theworcestershirechimneysweep.co.uk](http://www.theworcestershirechimneysweep.co.uk)



## Booton Brothers



Rich: 07445298747

Mike: 07853225401

[bootonbrothers@outlook.com](mailto:bootonbrothers@outlook.com)

All building work undertaken

## **THE NEIGHBOURHOOD DEVELOPMENT PLAN**

**Steve Blackburn, chairman of the Group, explains its structure, its membership and the work covered so far as it builds a plan for the future development of the town.**

---

### **What is the Neighbourhood Development Plan?**

120 houses will be built somewhere in Cleobury Mortimer as part of the Government National requirement. Having a Neighbourhood Plan enables the public to influence what is built where and include many community benefits too. Without a neighbourhood plan the community have little or no say at all.

### **Who are the NDP Steering Group?**

This is Community not Council led and the Steering Group make the decisions not the Town Council. The Steering group is made up of seven local residents who are not councillors and three town councillors who live in the town. The Town Council will vote on the final version before a final public vote / referendum in 2021.

### **Where are we now?**

The two sites identified as suitable in the plan are:

Phase 1. 60 houses off Tenbury Road

Phase 2. 60 houses off Ludlow Road

The steering group will continue to listen carefully to all concerns and the focus continues to be on public safety, community benefits and the environment. Public safety includes a highways assessment of Tenbury Road junction / agreeing workable improvement option(s) BEFORE houses are built in phase 1 and implementing any such improvements BEFORE phase 2.

[this is the subject of ongoing negotiations with the landowners which have been positive and constructive].

I am the chair of the Community led steering group is and can be contacted on: [chair.cleobury.ndp@gmail.com](mailto:chair.cleobury.ndp@gmail.com)

The steering group welcome your thoughts in addition to the public feedback to date and will provide regular communication updates.

*Steve Blackburn*

## **POTHOLE OF THE MONTH**



In advising us of this prize sample, our reader asked if we were still doing POTM. With so many still out there, waiting to give drivers and riders grief, we certainly are. We don't send a copy of the page to the Highways Department any more, as they never did respond, even though we sent a certificate of achievement each time.

This example is on Catherton Road, deep enough for the splash of gravel to spread across the footpath. A double whammy! JR

# SEVERN

architects

[www.severnarchitects.com](http://www.severnarchitects.com)

We are a local Shropshire based architectural Practice with lots of experience in all kinds of residential projects large and small. We are friendly and approachable looking for clients who value design quality, experience and expertise.

Our Architectural Design Services include

- Design & Feasibility Studies
- General project Advice
- 3D Modelling
- 2D CAD Drawing
- Planning Advice and Submissions
- Building Regulation Applications
- Tender & Construction Drawings
- Contract & Project Management

RIBA 

Chartered Practice

The Guard House  
Forest Park,  
Cleobury Mortimer  
DY14 9BD  
Tel: 07825 759484

Get in contact Julie Widdowson for your free consultation



## **Catherton Common Update**

**This very valuable Site of Special Scientific Interest is a precious asset that deserves careful treatment. Clive Dean of Shropshire Wildlife Trust explains.**

We have recently had an example of a resident on Catherton Common having the worry of an investigation by Natural England for potentially damaging a Site of Special Scientific Interest (SSSI). The investigation was related to what seemed like relatively straightforward work on the common but carried out without prior consent. Fortunately this resulted in no penalty but a warning letter. However this is not something I would like other residents to suffer so I would like to offer some useful advice.

While living in and around Catherton common comes with great benefits of lovely countryside and wildlife, and peace and tranquillity it also brings with it some responsibilities associated with most of the land around the properties being SSSI and/or Common Land much of which is owned by Shropshire Wildlife Trust. The SSSI designation is due to its very high value for rare and threatened wildlife and habitats. This means there are a number of things you must not do without prior permission.

There are a number of things you can do to help protect the common:

Please compost or burn garden waste on your own land or dispose of waste properly. Do not leave it on the common.

Vehicles and materials should be stored on your own property not on the common unless you have a permit.

Please keep dogs on a lead during the bird nesting and lambing season (31<sup>st</sup> March to 31<sup>st</sup> July).

Please keep all vehicles to surfaced tracks; driving across the common will damage habitats and species.

Please report fly tipping to the local Council or to Shropshire Wildlife Trust.

It is an offence for any person to intentionally or recklessly destroy or damage any of the flora, fauna, geological or physiographical features of special interest, or intentionally or recklessly disturb any of those fauna. The activities listed above are some of the ones that could cause damage to the SSSI, others include:

Killing or removing any wild animals or destroying any plants or plant remains, including moss, leaf mould or turf

New Drainage or modifications to any watercourses including ditches

Infilling of ponds, pools and ditches

Construction or removal of roads, tracks, walls, fences, hardstanding and a number of other features

For a full list and for more guidance you can follow this link to see if you need consent

<https://www.gov.uk/guidance/protected-areas-sites-of-special-scientific-interest#check-if-you-need-consent>

There is now a Protected Sites team who deal with all in-coming queries regarding SSSIs. The e-mail address is: [ProtectedSites@naturalengland.org.uk](mailto:ProtectedSites@naturalengland.org.uk)

Telephone 0300 060 3900

*Clive Dean*

*Shropshire Wildlife Trust*

# Cleobury Opticians

NHS & private eye tests ♦ FREE children's glasses

FREE NHS glasses ♦ Home visits



Opening Times:	
<b>Tuesday</b>	9am-1pm 2pm-5pm
<b>Wednesday</b>	9am-1pm 2pm-5pm
<b>Thursday</b>	9am-1pm 2pm-5pm
<b>Friday</b>	10am-2pm
<b>Saturday</b>	9am-1pm

[www.cleoburopticians.co.uk](http://www.cleoburopticians.co.uk)

16 Church Street, Cleobury Mortimer, Kidderminster  
DY14 8BX

Tel: **01299 270012**

Email: [cleoburopticians@outlook.com](mailto:cleoburopticians@outlook.com)



## Gilbert Carter

Specialist Joinery

- Built in Wardrobes
- Double Glazed Wooden Windows
- Staircases
- 

[www.gcartersmartjoinery.com](http://www.gcartersmartjoinery.com)

**01299  
270626**

Qualified tradesmen, fully insured



**07971 361901 or 01299 832484**

**Complete Bathroom Installations  
Bathroom Refurbishment or Repairs  
Wet Rooms  
Professional Wall and Floor Tiling**



For a quality and guaranteed service, call Stuart for a free quote  
Highly Recommended / References available - see my reviews on [www.freeindex.co.uk](http://www.freeindex.co.uk)

**FOR THE BATHROOM YOU DESERVE!**

# Community Contacts for Clarion Readers

CEMETERY ADMINISTRATOR	Theresa Parfitt	07703 965 064	theresa.25016@hotmail.co.uk
CLEOBURY COUNTRY CENTRE		01299 272300	In Love Lane, 9 to 5 Mon to Fri.
CITIZENS ADVICE		08444 991100	Advisors on line 10.00 to 4.00
CLEOBURY CARERS	Janet Manley	01299 272841	
CLEOBURY COMPASSIONATE COMMUNITIES	Katja Ward	01299 270018	10.00 to 12.00 Weds
CLEOBURY MORTIMER LIBRARY		01299 272301	Open 9 to 7 Mon, 9 to 5 Tues/Fri and 10 to 1 Sat.
LOCAL POLICE	Constable Anne O'Leary		ann.oleary@westmercia.pnn.police.uk
CLEOBURY MORTIMER GUIDES	Dorothy McBride	07761 976610	
CLEOBURY MORTIMER SCOUTS	Lowri Hughes		<a href="mailto:cleoburybeavers@gmail.com">cleoburybeavers@gmail.com</a>
CRIMESTOPPERS		0800 555 111	Free Police contact. Talk in confidence, to report any crime.
DOMESTIC VIOLENCE HELPLINE		0800 783 1359	Women's Aid, 24 Hour support:
HOME FROM HOSPITAL		01584 878046	Help over the first weeks back home from Age UK
MARKET HALL	Ali Sheffield	07752 542 853	<a href="mailto:markethall@cleobury.org.uk">markethall@cleobury.org.uk</a>
MEDICAL CENTRE		01299 270209	Out of surgery hours, use the Shrop Doc Service.
SHROP DOC		111	Service available evenings and weekends
THE PHARMACY		01299 270219	Closes for half day on Saturday. Delivers prescriptions
NEWLIFE CHURCH	Pastor E Stirrup	01562 630595	Sunday services at 10.30
NIGHTINGALE NURSING FUND	Rosemary Abbiss	01746 718451	
TOWN COUNCIL	Clerk Matthew Sheehan	01299 271154	Cleobury Country Centre 9 to 2 pm, Mon to Fri. <a href="http://www.cleobury.org.uk">www.cleobury.org.uk</a> . Council meets in the Centre on the first Monday of the month
POST OFFICE		01299 270211	In the Select and Save Grocery Store, Church Street
SAINT MARY'S YOUTH PROJECT	Mark Greaves	07828 116810	<a href="mailto:mark.stmarys@live.co.uk">mark.stmarys@live.co.uk</a>
SHROPSHIRE COUNCIL		0345 678 9000	
SOUTH SHROPSHIRE YOUTH FORUM			<a href="mailto:richard@ssyf.net">richard@ssyf.net</a> .
VOLUNTARY CAR SCHEME		01299 666119	Mandy Smith
WASTE DISPOSAL		0345 678 9007	The contractor is Veolia
WATER SUPPLY EMERGENCIES	Severn Trent	0800 783 4444	

**Collect the Clarion in Cleobury from:** Select and Save Grocery, Butler's Store, Cleobury Cafe, The Severn Hospice Shop, Mid Counties Co-op, Purslows, The Library and Swift's Bakery Tea Room.

**Out in Cleobury Country at:** Heath Farm Meats, **Bagginswood**; **Clee Hill Stores**; The Village Store, **Cleobury North**; **Clows Top Stores**; The Sun and Slipper, **Mamble**; **Hopton Bank Service Station**; Bennetts End Inn, **Knowbury**; **Ludlow Library**; **Mawley Oak Garage**; The Colliers Cafe & Shop, **Rock**; The Fighting Cocks, **Stottesdon**; The Duck Inn, **Chorley**; The Live and Let Live, **Neen Sollars**; The Eagle and Serpent, **Kinlet**; Parker Motors, **Ditton Priors**.

**Copies are also available from the Parish Churches in:** Cleobury Mortimer, Bayton, Doddington, Hopton Wafers, Milson, Neen Savage and Neen Sollars.

**Missed your Clarion? Cleobury Mortimer Library keeps the current month's copy on file and all back issues are available to read as pdfs from [www.cleoburyclarion.co.uk](http://www.cleoburyclarion.co.uk).**

**DEADLINE FOR THE DECEMBER/JANUARY ISSUE: NOVEMBER 22nd**

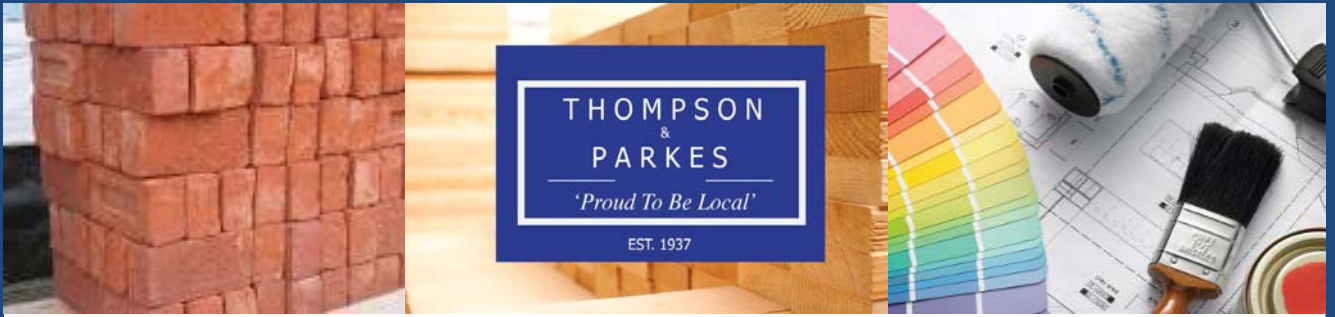
**Editor and Advertising Sales:** Jim Reynolds, 4 Childe Road, Cleobury Mortimer, Shropshire

DY14 8PA. Telephone: 01299 270642 Mobile: 07410 977 212

E-Mail: [editor@cleoburyclarion.co.uk](mailto:editor@cleoburyclarion.co.uk) or [uncle.jim@icloud.com](mailto:uncle.jim@icloud.com)

The Clarion On The Web: [www.cleoburyclarion.co.uk](http://www.cleoburyclarion.co.uk)

Printed by Badger Print and Design of Shifnal, 01952 730511



Your local specialist supplier of  
Insulation, Timber, Plywood and all Building Materials

# THOMPSON & PARKES

Offering 'you' the best  
service locally

**Kidderminster**

**01562 745881**

**Oreton**

**01746 718414**

**Stourport**

**01299 534545**



**Proud to be Local**

[www.thompsonandparkes.co.uk](http://www.thompsonandparkes.co.uk)

**Stocking and Delivering all Your Building and DIY Materials**

**Kidderminster**

**Oldington Trading Estate DY11 7QP**

**Oreton**

**Cleobury Mortimer DY14 0TH**

**Stourport**

**Minster Road DY13 8AB**